



**成都凡唐科技**  
Chengdu Firmtop Technology  
<https://www.firmtop.com>



**Professional Supplier of Vehicle Surveillance Products &  
Car Electronics**

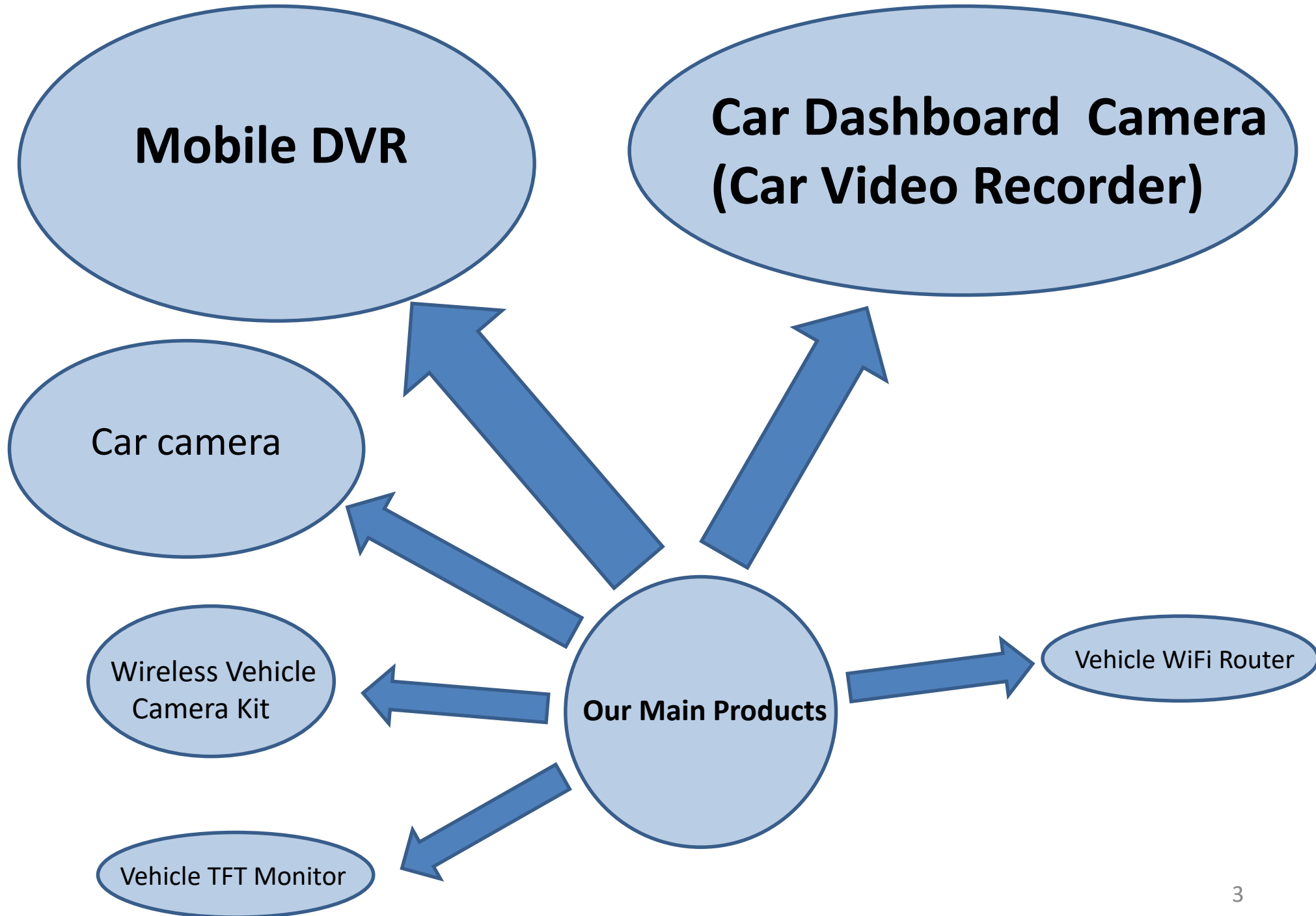
# About us

**Chengdu Firmtop Technology Co., Ltd** is a high-tech enterprise which specializes in inventing, designing, manufacturing, selling vehicle surveillance products and car electronics.

The main products cover 4G / 3G vehicle mobile dvr (including hard drive vehicle mobile dvr, sd card vehicle mobile dvr), car camera, wireless vehicle camera kit, vehicle TFT monitor, vehicle wireless router, car video recorder, car charger and sport & other camcorders, totally in eight categories and dozens of products.

For years, we have been upholding the theory of '**Technology Changes Life, Innovation Motivates Development**' in management. We not only have an experienced management team, high qualified work team, advanced production line and inspection equipment, but also have a set of complete administration mode. We have already been the brand supplier of vehicle surveillance products in this filed. Our products have been sold to more than 80 countries all over the world.





The background is a solid blue color. On the left side, there is a white geometric pattern consisting of interconnected lines forming various polygons. Scattered across the blue background are several colorful triangles in shades of purple, teal, light blue, green, and orange. The text 'Mobile DVR' is positioned on the right side of the image.

# Mobile DVR

# FT-950

On-Board Intelligent Terminal

- ✓ With H.265 high profile compression, save 50% space
- ✓ Using our FT dedicated filesystem
- ✓ Support 2pcs HDD / SSD with 7mm
- ✓ Support tri-working (recording, playback, and remote monitoring at the same time )
- ✓ With good anti-vibration function
- ✓ With 3 RS232 + 2 RS485



GPS



3G/4G



WiFi hot-spot



Dual HDD



Dual SIM card

Professional Mobile DVR & Intelligent Dispatching Device and System Solution Provider



**NEW**



Front



Rear

# Public bus intelligent dispatching terminal FT-950 series



## Model

Basic model: FT-950

### Optional function

+A : GPS/GLONASS

+B : 4G / 3G

+E : RJ45

+F : SD card slot

+W : Wifi

+K : Canbus

+J : Fireproof box

+L : Wifi hotspot

+O : AMP

## Specification

H.265 Video format .

4/8 video input, 1 video output, full real-time video (4/8 960H / 720P / 960P / 1080P)

4/8 audio input, 1 audio output, and video synchronous recording.

Support 1\*VGA output, 1\*CVBS video output.

Recording image quality support 1-8 levels adjustable.

Use a dedicated file system to improve the life of the hard disk; can not manually modify the hard disk storage video, audio data, can be more reliable evidence.

Pull-type hard disk box, support two 2.5-inch 7mm notebook hard drive.

eSATA\*1, backup video data become more faster.

With dual SIM card slots

USB 3.0\*1, make backup video data become more faster, software upgrades and maintenance more convenient.

Support 4/8 channel video, audio playback at the same time.

Support video, playback, network monitoring synchronization.

With user password management function.

12CH alarm input,3CH alarm output (2CH relay output,1CH 12V output), 2CH analog input.

1CH pulse signal speed sensor interface.

Support delay shutdown .

Real-time clock.

DC8-38V wide range voltage supply to adapt to vehicle voltage fluctuations.

Support two-way shared 12V, 1A power output, support for two-way sharing 5V, 1A power output.

Support super shock absorption and shockproof function.

RS232 \*3, RS485 \*2 (PTZ control).

Two-way voice intercom interface.

G-sensor function.

# 4CH 1080P Dual HDD & Dual SIM Mobile DVR / NVR

## Model: FT-920-DVR / NVR series

4G/3G/GPS/WiFi/WiFi hot-spot/  
G-sensor/RS485/RS232/RJ45  
functional module or interface for option

Support 2 x 2TB (Max) SATA HDD, 2 x SIM cards  
Canbus / Intercom / Overspeed Alarm / Oil Power  
Control / SMS Alert / GEO functions for option

Solution for Public Bus / School Bus / Truck /  
Long-distance Passenger Bus / Taxi / Ambulance  
/ Police Car / Train / Private Car



Bus



Police car



Truck



Train



Private car



Front



Back



## Model

Basic model: FT-920

### Optional function

- +A : GPS/GLONASS
- +B : 3G/4G
- +E : Rj45
- +F : SD card slot
- +W : Wifi
- +K : Canbus
- + J : Fireproof box
- + L : Wifi hotspot
- + O : AMP

## Specification

- H.264 Video format .
- 4/8 video input, 1 video output, full real-time video (4/8 960H / 720P / 960P / 1080P).
- 4/8 audio input, 1 audio output, and video synchronous recording.
- Support 1\*VGA output, 1\*CVBS video output.
- Recording image quality support 1-8 levels adjustable.
- Use a dedicated file system to improve the life of the hard disk; can not manually modify the hard disk storage video, audio data, can be more reliable evidence.
- Pull-type hard disk box, support two 2.5-inch 7mm notebook hard drive.
- eSATA\*1, backup video data become more faster.
- USB 3.0\*1, make backup video data become more faster, software upgrades and maintenance more convenient.
- Support 4/8 channel video, audio playback at the same time.
- Support video, playback, network monitoring synchronization.
- With user password management function.
- 12CH alarm input,3CH alarm output (2CH relay output,1CH 12V output), 2CH analog input.
- 1CH pulse signal speed sensor interface.
- Support delay shutdown .
- Real-time clock.
- DC8-38V wide range voltage supply to adapt to vehicle voltage fluctuations.
- Support two-way shared 12V, 1A power output, support for two-way sharing 5V, 1A power output.
- Support super shock absorption and shockproof function.
- RS232 \*3, RS485 \*2 (PTZ control).
- Two-way voice intercom interface.
- G-sensor function.



# 4/8CH HDD MDVR FT-910/918 Plus series



## Specification

4CH/8CH 1080P/720P/960H NVR/AHD real-time video recording, 4/8 channel audio synchronous recording.  
2.5 inch HDD, max 2TB storage, SD card & HDD dual storage.  
H.264 video format, Linux system, dual stream.  
Support remote download and playback function according to the file or accurate to seconds, saving much time and data.  
FTES correction encrypted file management system, no video loss and record data 2s before sudden power off.  
Support pre-alarm record, motion detection and alarm linkage  
1pc VGA output, maximum support 1080P.  
Support 2pcs 3G/4G wireless modules, WIFI or WIFI hotspot, GPS/ Glonass, G-sensor optional .  
RS-232 x 2, RS485 x 2, USB2.0 port x 1, CANBUS 2.0B x 2,  
1CH 12V output control  
Support extendable devices like LED screen, ID reader(support data of swiping card breakpoint resuming), bus station reporter, people counting camera etc.  
Automobile black box function, can record speed, GPS position, acceleration of gravity, brake, back the car, swerve, alarm etc.  
DC8-36V wide range voltage supply, industrial standard , embedded design, military level cushion technique.

## Model

Basic model: FT-910 Series

### Optional function

- +A : GPS/GLONASS
- +B : 3G/4G
- +E : RJ45
- +F : SD card slot
- +W : Wifi
- +K : Canbus
- + J : Fireproof box
- + L : Wifi hotspot
- + Q : Advanced

# 4CH Mini AHD Dual SD Cards MDVR FT-830 series / FT-530Q series (1080P)



## Model

Basic model: FT-830(AHD) / FT-530Q series

### Optional function

- +A : GPS
- +B : 3G/4G
- +E : RJ45
- +D: Alarm,RS232/RS485,VGA
- +W: Wifi
- +K: Canbus
- +L: Wifi hotspot

## Specification

- 4CH video local recording and playback, support 1080P(1920\*1080)/ 720 P (1280x720)
- Meet the ISO7637-2 Electrical Resistance Standard. Adopt high quality positioning and communication module with good stability
- Support speed, turn, brake, reversing, doors opening and closing
- Watermark prevents data from being tampered to ensure the veracity and the legal efficiency of the data
- Support break points GPS data transmitting after reconnecting, can realize remote video surveillance, video download, remote alarm, equipment time-correcting, network setting and remote updating etc.
- Support local and remote upgrading
- Adapt 3G network bandwidth dynamic changes automatically, improving video streaming consistency
- Mini size (132\*137\*40mm) breaks industrial extremity ,convenient for transportation and Installation



Front



Back

## Product parameters

Items	parameters	Performance standard
Name	Product name	4CH Mini AHD Dual SD Card Mobile DVR
System	Operation system	LINUX
	Operation interface	Graphical menu operation interface (OSD Menu)
	File system	FTES error correction encryption file management system
Video	Video input	4 channels
	Video output	3 channels (2 channels 1.0Vp-p, 75Ω, 1 channel 1080P)
	Video display	1 or 4 channels
	Signal system	PAL:25FPS;NTSC:30FPS
	Total resources	PAL:100FPS;NTSC:120FPS
Audio	Audio input	4 channels
	Audio output	2 channels
	Record format	Synchronized video & audio recording
	Audio compression	ADPCM
Digital processing and storage	Video compression	H.264
	Image resolution	PAL: 4*1080P(1920*1080) ; NTSC: 4*1080P(1920*1080)
	Image quality	1-8 levels adjustable (1 is the best)
	Video bit-rate	1080P: 192K~4M bps(each channel)
	Video storage	1080P: 84M~1.75GB Byte/hour(each channel)
	Playback resolution	PAL:1*1080P/2*1080P; NTSC: 1*1080P/2*1080P
	Storage	Support 2 SD cards ,max 128GB each
Alarm	Alarm input	4 channels ( activated by high voltage)
	Alarm output	1 channel
	Motion detection	High/middle/low sensitivity adjustable
LAN	RJ45	Optional ( Used for video monitoring)
	Wifi	Optional
	3G/4G	HSPDA/EVDO/CDMA2000/FDD-LTE/TDD-LTE Module optional
GPS	GPS	GPS/ Glonass module optional
Extension interface	RS232	RS232 interface X1
	RS485	RS485 interface x1
	Intercom	Available
	G-Sensor	Available
	Canbus	Optional
Others	Power supply and consumption	DC8-36V 5%≤8W
	Operating temperature/humidity	-40°C~ +70°C/≤80%
	Dimension	132 ( L ) *137 ( W ) *40 ( H ) mm
	Package	L178*W120*H178mm/unit
	Net weight	0.6KG/set
	Gross weight	0.9KG/set

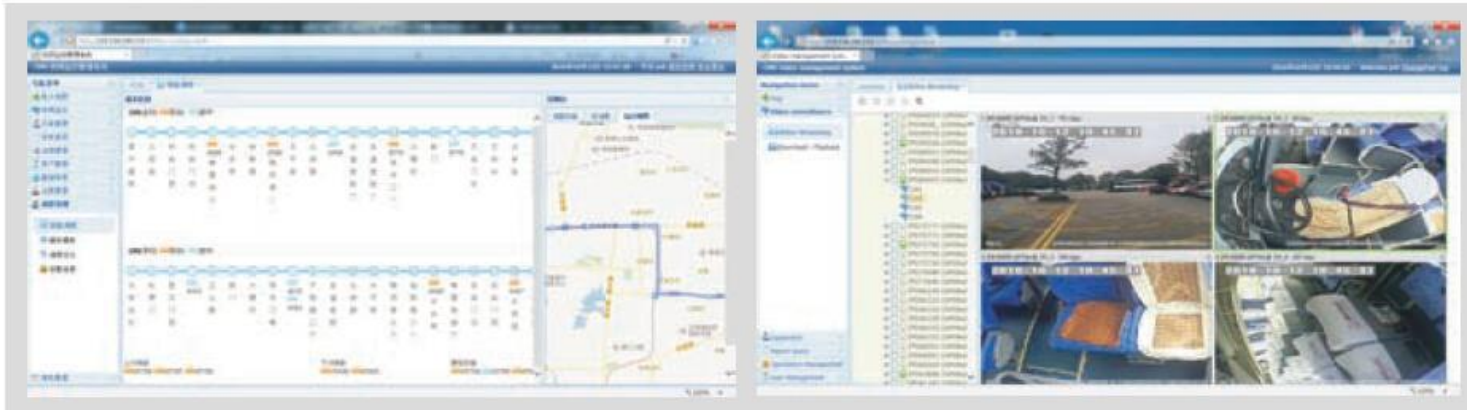
# System platform management software

(for MDVR / MNVR: FT-950/958/920/910/918/9112/530Q/830 series)

## 1 B/S Intelligent Dispatching System for Bus

### Features

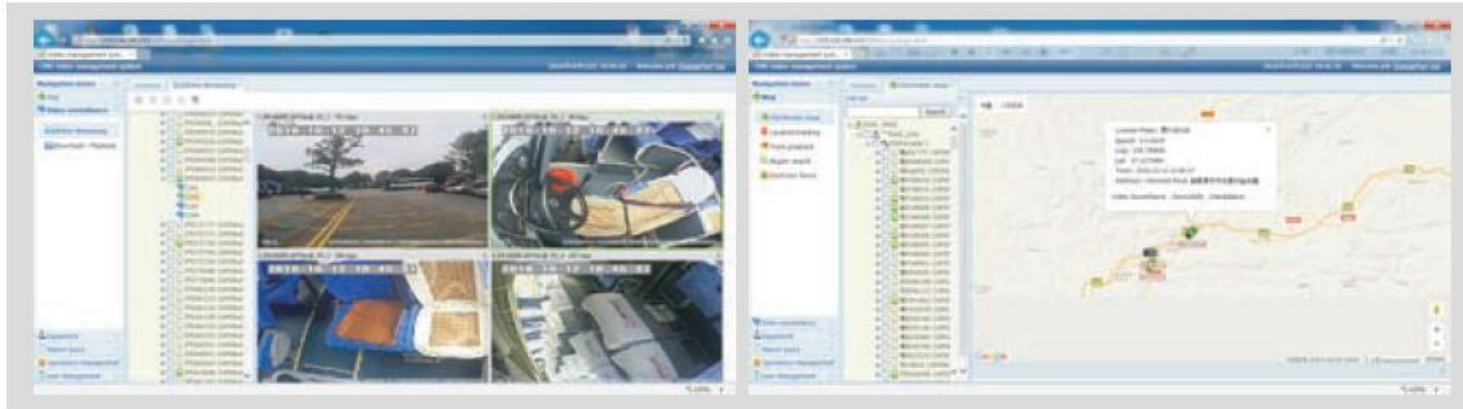
- Adopted advanced B/S program structure design, good reliability and easy to maintenance
- Specially designed for public bus dispatching system, including bus running diagram, stations and routes managing, automatical schedual, intelligent dispatching and etc.
- Bus real-time GPS tracking and monitoring, GPS route playback and electronic fence
- Real-time remote audio and video monitoring, remote video playback and download
- Bus schedule statistics, mileage calculation, driver attendance, overspeed, abnormal open and close door statistics, providing a very good data support for supervisors



## 2 B/S Intelligent City Video Alarm Network Platform

### Features

- Support remote real-time audio and video monitoring with single or multi channel playing, support remote video playback and download
- Vehicle real-time tracking and monitoring, vehicle area searching, historical route playback
- Lots of logs for check: vehicle alarm, overspeed, border crossing, fuel sensor, people counting...
- Real-time monitoring HDD condition, GPS condition and video loss...
- Support remote mdvr configuration, realize vehicle fuel and power cut off remotely, SMS and LED advertisement content delivery...



## 3 Mobile phone monitoring client software

### Features

- Achieve vehicle real-time video & audio recording and GPS positioning
- Achieve vehicle intercom, broadcasting function, supports snapshot and storage
- Supports PTZ remote control, and remote control the cut-off of vehicle power & oil
- Real-time monitoring vehicles alarm status ,supports vehicle tracking and remote video playback



Andriod

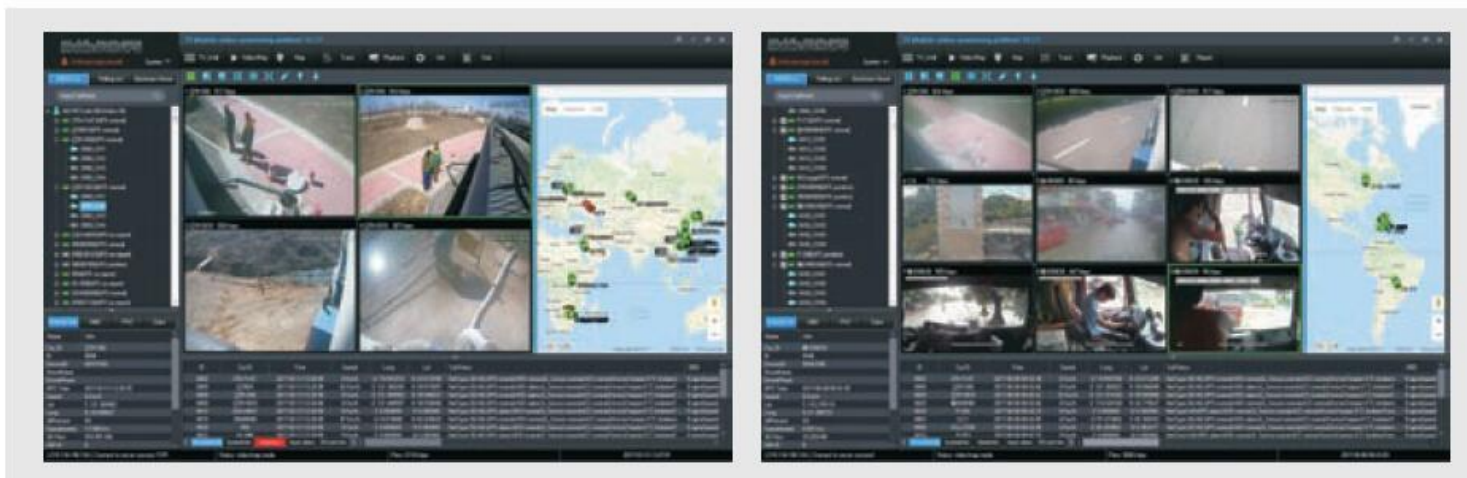


IOS

## 4 T8 Mobile Video Monitoring Platform

### Features

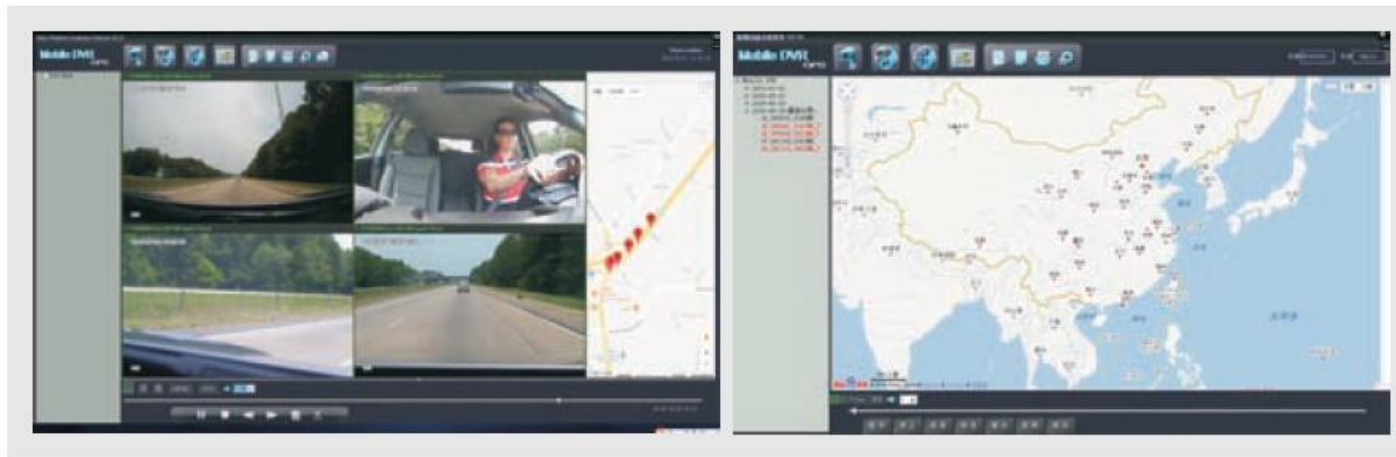
- 5000pcs vehicles real time monitoring
- Real-time Video & Audio monitoring
- Single & multiple and full screen images monitoring,max to 32 images
- Real-time vehicle status showing: vehicle on line quantity, speed, position, brake and Parking sensor.
- Support Vehicles Steering, brakes, door alarm information
- Support time correction, software upgrades,parameters configuration,oil and electric break,video download and playback
- JPEG image real-time capture
- Local real-time video and audio recording
- Voice intercome, broadcasting, test to speech
- Vehicle trace playback
- Electric fences, route offset function
- Alarm linkage (speed alarm, emergency alarm, video signal loss alarm ,hdd error alarm and E-map alarm mark)
- Support google, baidu, police geographic information system map etc
- Support multiple client log-in at the same time, different permissions can be set
- Wifi download automaticly
- Alarm log, HDD damage log, equipment log, user log etc
- Data transmission, LED advertising



## 5 Video Playback Software

### Features

- 4/8CH video real-time playback
- BMP image capture
- Fast forward & Reverse, single-frame playback
- No loss at conversion to AVI file and original video clips
- Data backup in HDD and SD card
- Special area Video hidden
- Video data and GPS /Beidou trace information synchronours analyzation







**FIRMTOP TECHNOLOGY®**

***Face recognition in  
mobile vehicle security solution***

The face recognition is mainly used in driver identity authentication, driver attendance by face comparison, facial picture capture and blacklist alarm in the mobile vehicle monitoring system. This enables the effective combination of artificial intelligence and smart vehicle operation&management, greatly helped transportation companies to achieve a safer, more efficient and smarter vehicle management system.

## Functions



Driver identification authentication



Driver attendance by face comparison



Facial picture capture



Blacklist alarm

## Solution Features

Widely used in public bus, coaches, urban taxi / on call vehicles, armored car, logistics, law enforcement and etc.



Public Bus



Coaches



Urban Taxi/On call vehicle



Armored Car



Logistics



Law Enforcement



## Model

Basic model: FT-329A7-RS

## Specification

- High performance: advanced tracking algorithm, low rate of false positives
- Easy operation: intuitive web browsing debug interface
- Three-dimensional calibration technique: the lens correction filter size and speed
- Detection area diversification: support area, in-line, polylines and polygons
- Screen Display: the number of information can be in the video display and intuitive to understand
- Eliminate camera shake: for camera shake is likely to improve the performance of intelligence analysis
- Multi behavior detection: available for direction, stop, hover, enter, leave, appearance, disappear filtration, derelict / move items detection, detection dog
- Intelligence: built-in intelligent video analysis module, accuracy rate can up to 95%
- Trigger: flexible RS-485 mode, after opening statistics, closing stop system. reduce errors.



## Product parameters

Items	Performance standard
Model	FT-329 A7-RS
Name	People counting camera
Sensor type	SONY 1/3 CCD
Pixel	976(horizontal)×582(vertical)
Horizontal resolution	700TVL
Minimum illumination	Color 0.1Lux @(F1.2,AGC ON),0 LUX with IR
	Black 0.01 Lux @ (F1.2,AGC ON),0 LUX with IR
Characters overlap	Support ( DSP )
Signal system	PAL/NTSC optional
Shutter	1/50 s -1/100000 s
Lens	1.8mm @ F2.0
Adjusting angle	horizontal:0°~180°;vertical:0°~90°
Day and night	Electronic auto color turn to black
Synchronization system	Inter-sync
Video output	1Vp-p Composite Output(75Ω/BNC or aviation)
SN	> 62dB
Audio	Can not built-in
Trigger way	RS-485
color	white
Working temperature & humidity	-10℃~60℃, humidity < 90%(no condensation)
Power	DC12V±10%
consumption	< 5W
Video cable length	40cm
IP grade	Ip64
IR distance	10 m
Size(mm)	Product size: diameter 102.5mm* height 87mm , packing size: 120*120*100mm
Net/gross weight	421g /507g

# Driving safety auxiliary terminal (MDVR (FT-920 series) + ADAS + DSM )

## Product composition

The driving safety auxiliary terminal consists of four parts: the main unit, the DSM anti-fatigue acquisition camera, the ADAS camera, the speaker, and the GPS & 4G antenna (optional).



Anti-fatigue camera



ADAS camera

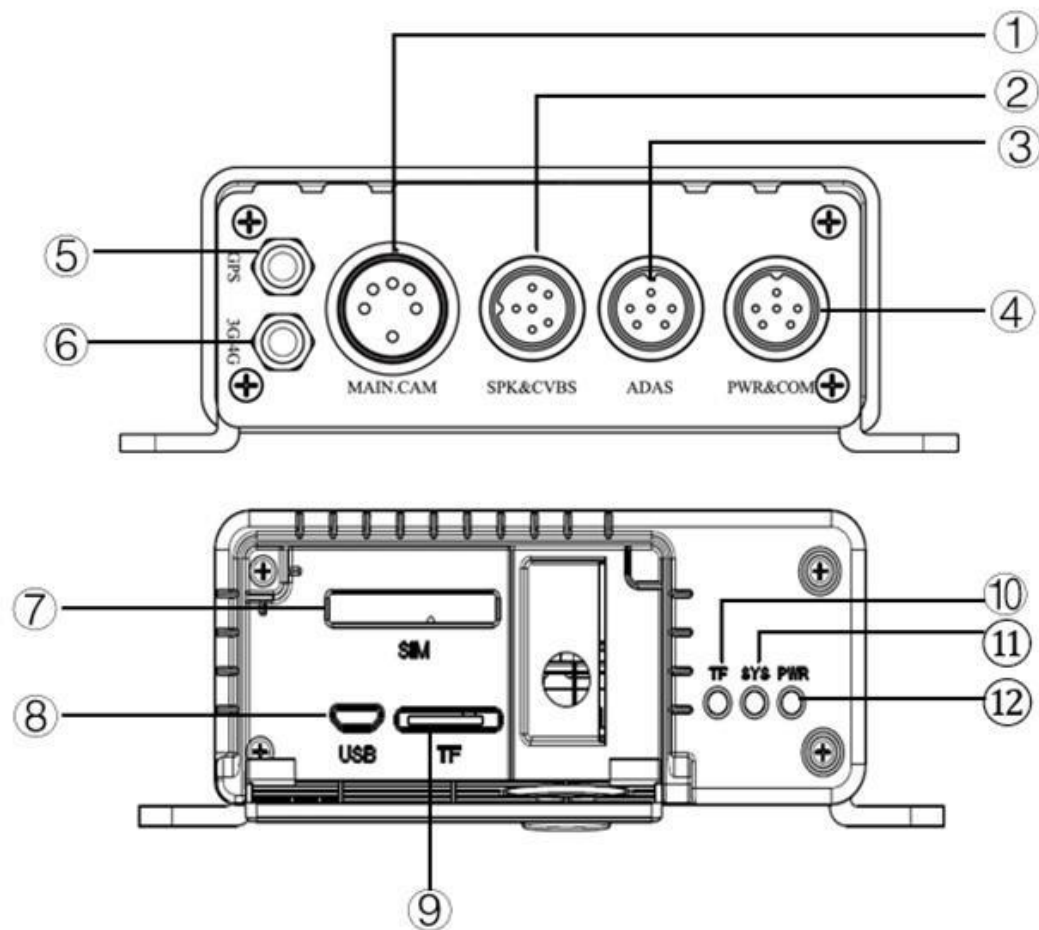


GPS&4G antenna



speaker

## Host interface introduction



Host: MDVR (FT-920 series)

### Interface name and description:

Number	Name	Description
①	<b>MAIN.CAM Interface</b>	Anti-fatigue capture camera interface
②	<b>SPK&amp;CVBS Interface</b>	Speaker Interface & Video Output Interface (Fatigue Detection Camera CVBS Signal, ADAS Camera AHD Signal)
③	<b>ADAS Interface</b>	ADAS camera + turn signal signal interface (red line to left turn signal, yellow line to right turn signal, black line to ground)
④	<b>PWR&amp;COM Interface</b>	Main power supply and communication interface (RS232 Ethernet two)
⑤	<b>SIM card slot</b>	The SIM card installs the card slot and supports the full Netcom (Note: pressing the yellow button next to the card slot will pop up)
⑥	<b>USB Interface</b>	USB interface for mobile phone APP debugging and firmware upgrade
⑦	<b>TF card slot</b>	Memory card slot (up to 32GB)
⑧	<b>TF card indicator</b>	Memory card indicator (current TF indicator is not used yet)
⑨	<b>System indicator</b>	System status indicator (SYS is steady green when the device is working normally)
⑩	<b>Power Indicator</b>	Power indicator (red light is always on during normal power-on state)

## Anti-fatigue camera installation

The overall installation position and angle effect display, as shown in Figure 2.1-1

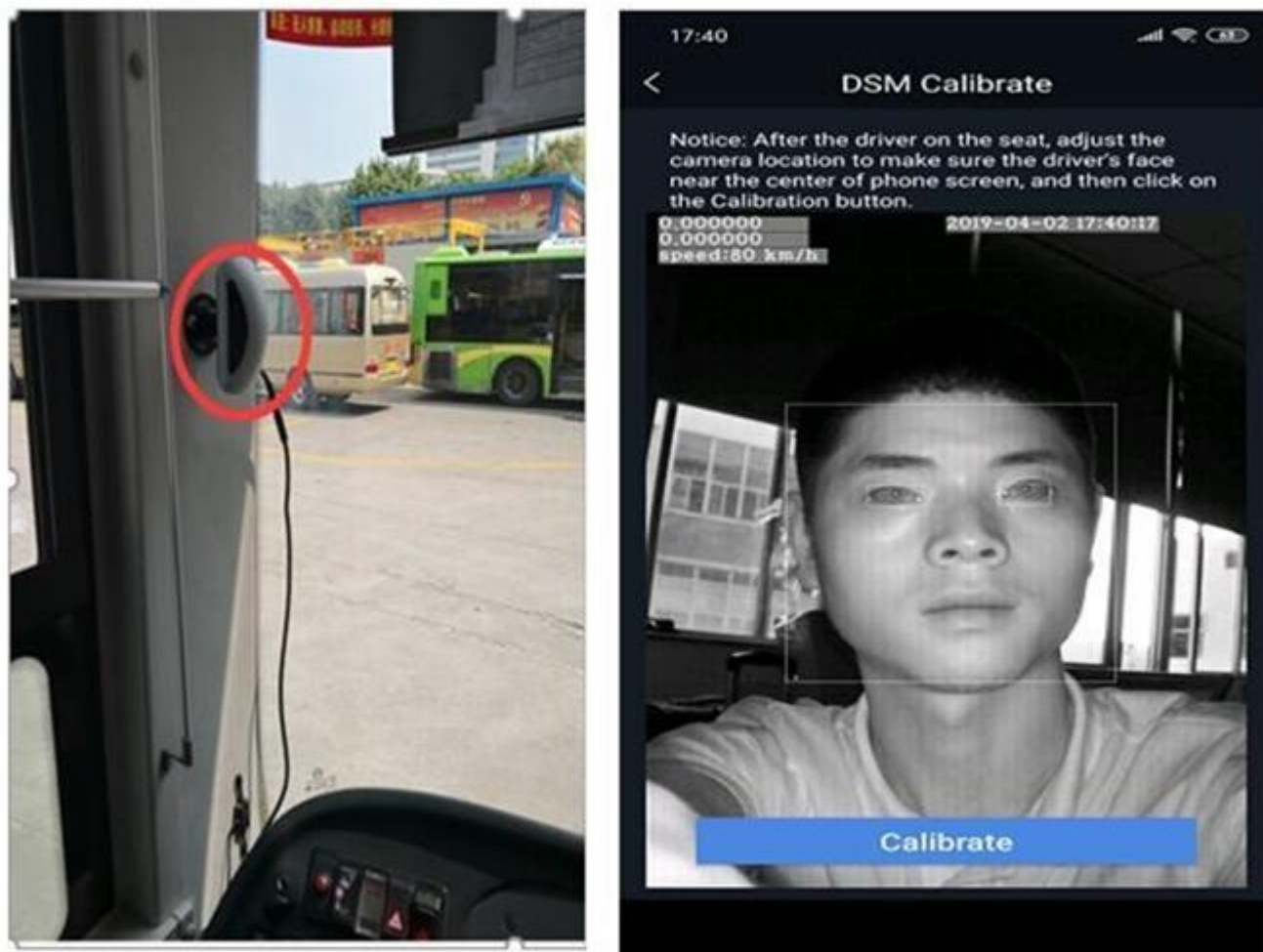


Figure 2..1-1

## • ADAS camera installation

Installation position: take the center of the windshield as the axis, move up and down according to different vehicle types, generally installed at a lower point (note: do not let the wiper affect);

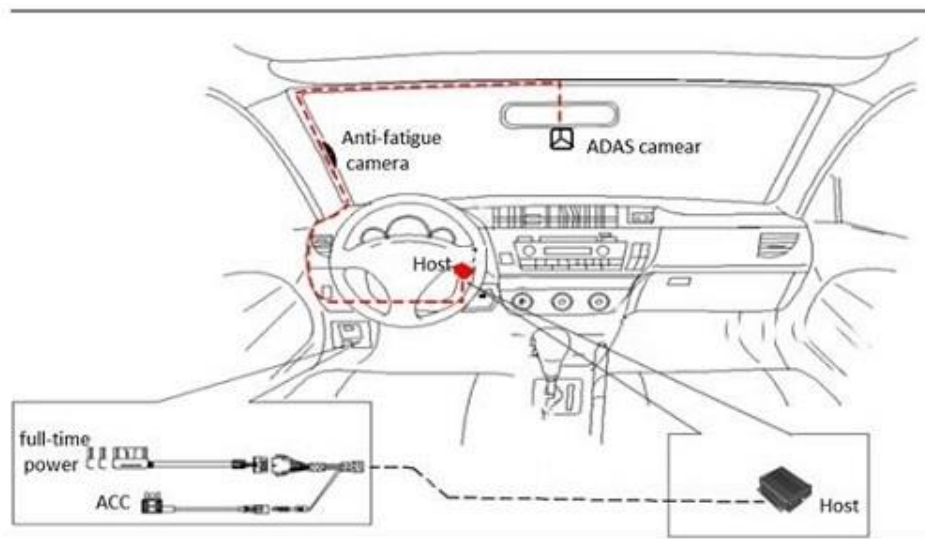
Installation method: There is a circle of 3M glue on the camera, which can be directly attached to the glass after tearing off the protective film;

Angle requirement: Rotation angle according to adjustment requirements (see 3.3 ADAS Commissioning for details)

### 2.3.1 ADAS Camera Installation Precautions:

- 1) The ADAS camera is mounted in the center of the windshield and is fixed with 3M glue (if it is a very inclined windshield, it is installed at a position slightly above the center; if it is a vertical windshield, Then install it at a position slightly below the center);
- 2) The ADAS camera is an analog camera. It does not support hot swap. You need to connect the cable before powering on the host. If the host has power, whether it is power or data line power supply, and then connect to the ADAS camera, then ADAS will not be able to use normally, and the mobile APP will not see the ADAS image; you need to restart the host to restore normal.
- 3) Connect the signal line of the turn signal to the vehicle. The signal line level is 3V-24V. The red line is connected to the left turn signal. The yellow line is connected to the right turn signal. The black line is not connected (red left yellow right).
- 4) When the signal of the turn signal is connected, as long as there is a jump signal, it is possible to connect from the high voltage or the low voltage. The position of the signal taken by different customers may be different, and there is no mandatory requirement. Judgment processing is carried out on the ground

## • overall installation wiring diagram





## Debugging

### 3.1 Preparation for debugging: mobile phone installation test APP and connection host

1) The camera debugging tool is the mobile terminal APP (Android version). The specific installation and debugging methods are as follows:..

2) Install the driving safety analysis demonstration system .apk into the Android phone (the phone needs to support OTG)..

After the device is powered on, connect one end of the debugging USB cable to the USB port of the host panel 2, and the other end to the OTG cable and then to the mobile phone (phone-OTG line-data line-host) as shown in Figure 3.1 below..

Note: The order of the OTG line and data line connection should not be reversed.



Figure 3.1

### 3.2 Anti-fatigue camera debugging

Open the debugging tool (the debugging tool will pop up automatically when the phone is plugged into the OTG cable. If it does not pop up automatically, you need to open the app .apk manually.) If the initialization is successful, the communication is normal. The normal interface is shown in Figure 3.2.1. (Note: Please tear off the lens protective film before use, otherwise the image will be blurred)..

Description: The mobile test app contains test mode and driving mode. In debugging, you need to set the APP to test mode..

The setting method is: in "Configuration" - "Developer Options" - "Test Mode", click the button, the button turns blue and is set to test mode. As shown in Figure 3.2.2 below..

After the test is completed, the test mode needs to be turned off, that is, enter the driving mode..

Click "Configuration" - "DSM Calibration", click "Open Video", the video interface will be displayed. At this time, the installation angle of the lens can be fine-tuned according to the video screen. The driver is required to face the position of the driving posture in front of the entire screen normally, ensuring that the driver's face is placed at the center of the image. Click on the calibration and the anti-fatigue camera can be fixed after the calibration is successful. As shown in Figure 3.2.3 below..

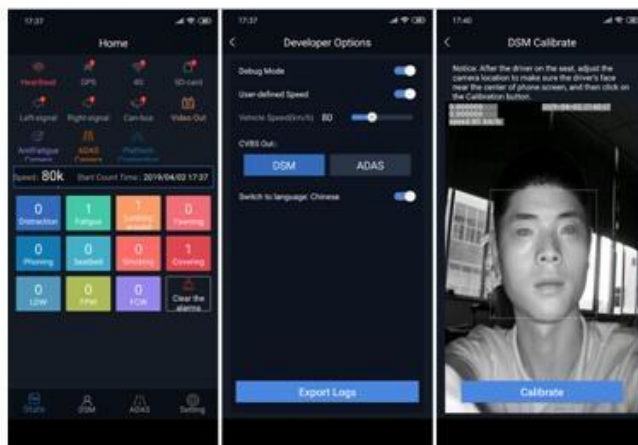


Figure 3.2.1

Figure 3.2.2

Figure 3.2.3

### 3.3 ADAS debugging

The ADAS Advanced Driver Assistance System is an optional feature for driving safety intelligent assist systems. It currently includes two functions: lane offset and front vehicle collision warning.

#### 3.3.1 Alarm Function Description:

The vehicle deviates from the current lane to the left/right and does not turn the turn signal	Lane offset
Distance to the front car x meters (x is related to the speed of the vehicle and the set threshold)	Please keep the distance
Distance to the front car y meters (y is related to the speed of the vehicle and the set threshold)	Collision hazard

#### 3.3.2 Debugging method

- 1) Refer to the "2.3 ADAS Camera Installation" section to fix the ADAS camera to the center of the front windshield;
- 2) Measure the required vehicle parameter size, as shown in Figure 3.3.2-1, and record the test results. Later in the test APP "Configuration" - "ADAS Calibration", enter the corresponding body parameters.



Figure 3.3.2—1

- 3) After the ADAS camera is fixed, connect to the mobile app and select the appropriate parameters in "Configuration" - "ADAS Settings". As shown in Figure 3.3.2-2:



Figure 3.3.2—2

4) ADAS calibration operation: On the mobile APP, go to "Settings" – "ADAS Calibration", as shown in Figure 3.3.2-3. View the ADAS video, fine-tune the scale on the camera, and then enter the corresponding parameters to ensure that the video can shine through the entire road surface. The distant horizon line is consistent with the horizontal line on the app (half the sky and half the road surface);



Figure 3.3.2—3

5) If the venue does not allow it, you can mark it at the same height (ie, the contour position) of the ADAS camera position about 1 meter in front of the car. Adjust the horizon position in the APP to coincide with this height, as shown in Figure 3.3.2. Calibration is performed as shown in Figure3.3.2-4;

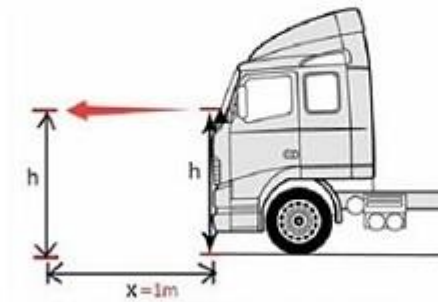
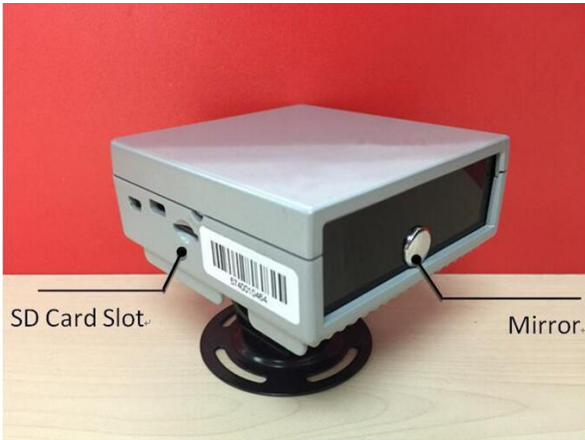


Figure 3.3.2—4



## Specification

This device is a new driving safety monitoring system based on the fifth generation algorithm of fatigue model. With image recognition analysis, it can monitor driver's behavior and spirit condition all the time and give alarms or warning to reduce traffic accidents when it detects any misbehaviors during the driving, **such as keeping head down, sleeping, looking around / aside, face missing, smoking, making call, yawning, blocking camera and etc.**



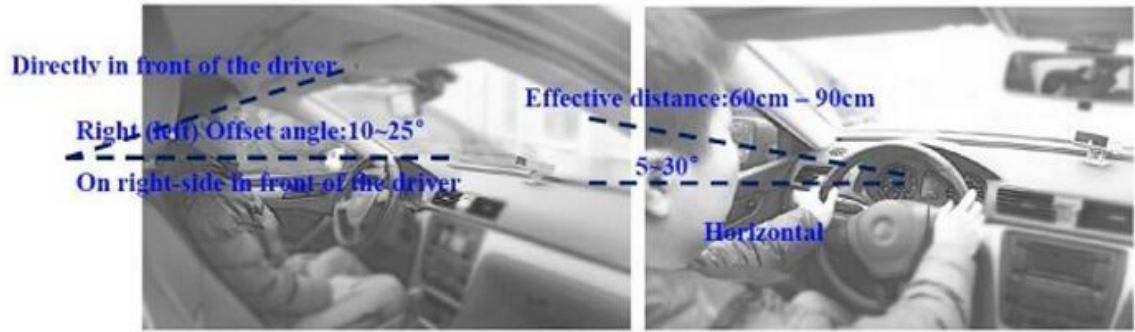
Misbehaviors **X**  
Warning:



# 1. Installation requirements

Use screws to fix FT-339A7 leaning to right side (10~30 degrees) in front of the driver and tilting up at the angle of 5~30 degrees;

Connect the lead terminal with the power supply wiring harness;



1. A top view of InstallationFigure 2. A side view of Installation

## 2. Accessories



1. Round head screw



2. Disc base



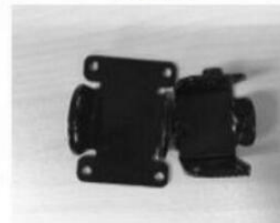
3. Host



4. Long screw



5. Grub screw



6. Bracket

## Vehicle IR Camera Series

Name & Model	Appearance	Features	Parameters
<b>Camera</b> <b>FT-120</b>		<ul style="list-style-type: none"> <li>• Double glass design, anti-reflection</li> <li>• 24Pcs TAIWAN TYNTEK-chip LED</li> <li>• 3.6-16mm lens for different view angle effect</li> <li>• IR lamp auto light when condition lower than 5 LUX</li> <li>• Standard 3.6mm single board IR lens</li> <li>• Plastic shell, indoor camera</li> </ul>	
<b>Camera</b> <b>FT-121</b>		<ul style="list-style-type: none"> <li>• Double glass design, anti-reflection</li> <li>• 24Pcs TAIWAN TYNTEK-chip LED</li> <li>• 3.6-16mm lens for different view angle effect</li> <li>• IR lamp auto light when condition lower than 5 LUX</li> <li>• Standard 3.6mm single board IR lens</li> <li>• Metal housing, indoor camera</li> </ul>	<ul style="list-style-type: none"> <li>• Sensor: 1/3"SONY CCD</li> <li>• Effective Pixels: PAL:512(H)×582(V) NTSC:512(H)×492(V)</li> <li>• TV System: PAL/NTSC</li> <li>• Horizontal resolution:0Lux/F1.2</li> <li>• Lens: 2.8mm/3.6mm/6mm/8mm/12mm/16mm optional , standard match 3.6mm)</li> <li>• Shutter Speed: 1/50 (1/60) -1/100,000Sec</li> <li>• S/N Ratio: ≥48dB</li> <li>• Video output: 1.0Vp-p75Ω;</li> <li>• Wavelength of IR lamp:850nm</li> <li>• IR distance: 5-15m</li> <li>• Working Power: DC12V</li> <li>• Working Current: &lt; 260mA</li> </ul>
<b>Camera</b> <b>FT-122</b>		<ul style="list-style-type: none"> <li>• Double glass design</li> <li>• 24pcs LED</li> <li>• 3.6MM-16MM Lens optional</li> <li>• Match with 3.6mm lens</li> <li>• Metal shell, waterproof, inside and outside car</li> <li>• Infrared lighting automatically when illumination below 5 LUX</li> </ul>	
<b>Camera</b> <b>FT-316</b>		<ul style="list-style-type: none"> <li>• Double glass design</li> <li>• 24pcs LED</li> <li>• 3.6MM-16MM Lens optional</li> <li>• Match with 3.6mm lens</li> <li>• Metal shell, waterproof, inside and outside car</li> <li>• Infrared lighting automatically when illumination below 5 LUX</li> <li>• Standard 3.6mm single board IR lens</li> <li>• Metal case, waterproof design, common inside and outside the car</li> </ul>	
<b>IR Intelligent PTZ camera</b> <b>FT-3018A7</b>		<ul style="list-style-type: none"> <li>• Industrial Power supply, voltage range DC11V-18V</li> <li>• Support diferent camera, SDIIPC and etc</li> <li>• High strength aluminum alloy precision casting shell, impact resistance, corrosion resistance;</li> <li>• 360 degree unlimited, up (+90° ~ - 90°) without blind spots</li> <li>• Can set automatic cruise, horizontal scan, camera mode and tittle display, etc</li> <li>• PTZ coordinates, lens magnification display function. Infrared night vision distance is more than 100 meters</li> </ul>	<ul style="list-style-type: none"> <li>• Horizontal manual control speed: 0° ~ 60°/S</li> <li>• Vertical manual control speed: 0° ~ 40°/S</li> <li>• Infrared light distance: 60m</li> <li>• Protection level: IP66</li> <li>• Working temperature: -35°C ~ +75°C</li> <li>• Power supply: DC12V(50VA)</li> <li>• Weight: 13kg</li> </ul>

## Vehicle PTZ camera series

Name & Model	Appearance	Features	Parameters
<b>Intelligent Laser PTZ camera</b> <b>FT-3018A7-J</b>		<ul style="list-style-type: none"> <li>For all day surveillance design, working temperature-35°C~+75°C;</li> <li>Night IR range distance more than 200M. Camera night IR range can be 500M</li> <li>Real-time processing focal lens information, laser light spot can automatically zoom with the lens, but also remote adjustment independently. PTZ preset and laser spot size synchronous linkage.</li> <li>Support different camera, SD,IIPC and etc</li> <li>Laser spot angel 0.2°~30°, convenient for user night far and wide vision monitoring</li> <li>The effect laser speckle, the maximum degree uniformity, and the spot of the maximum is eliminated by the imported display laser.</li> </ul>	<ul style="list-style-type: none"> <li>Horizontal manual control speed: 0°~60°/S</li> <li>vertical manual control speed: 0°~40°/S</li> <li>Infrared light range: 200m</li> <li>Vertical angle: +90°~+90°</li> <li>Preset points: 128Max</li> <li>control method: Multi-protocol,RS485 or onvif</li> <li>Protection rating: IP66</li> <li>work temperature: -35°C~+55°C</li> <li>power : DC12V(50VA)</li> <li>GW: 6kg</li> </ul>
<b>Thermal imaging camera</b> <b>FT-3018A7-R</b>		<ul style="list-style-type: none"> <li>For all day surveillance design, working temperature -35°C~+75°C</li> <li>High strength aluminum alloy precision casting shell, impact resistance, corrosion resistance;</li> <li>Using the most advanced third generation refrigeration vanadium oxide (VOX) of infrared focal plane detector, 320 x 240 pixels</li> <li>Provide excellent image quality and sensitivity, can detect temperature less than or equal to 85 mk (equivalent to f / 1 hour &lt; 35 mk);</li> <li>Thermal imaging detection range over 500 m, can output clean-cut and clear thermal images under full dark or thin fog condition.</li> <li>24 hours surveillance switches between IR thermal imager and camera video. The internal heater can endure extreme weather while image staying perfect</li> <li>Moisture-proof and waterproof</li> </ul>	<ul style="list-style-type: none"> <li>Model: FT-3018A7-R-F50</li> <li>Field:14° (horizontal) x 11° (vertical), 50 mm lens</li> <li>Spatial resolution:0.760 mrad (50 mmlens)</li> <li>Detection range: About2.2 km About780m</li> <li>Thermal imager performance: focal plane display (FPA), uncooled bolometer</li> <li>Probe type: 320 x 240 pixels</li> <li>Preset points: 128 Max</li> <li>Control mode: Multi - protocol, RS485</li> <li>Protection grade: IP66</li> </ul>
<b>Intelligent infrared PTZ Camera</b> <b>FT-3022A7-B/J</b>		<ul style="list-style-type: none"> <li>FT-3022A7 infrared</li> <li>FT-3022A7-B zoom infrared</li> <li>FT-3022A7-J synchronous laser</li> <li>Wiper function, to ensure that the lens cleaning;</li> <li>Can store 256 preset, data memory when power is off</li> <li>Protection grade IP66, supports three levels of lightning protection, surge prevention</li> <li>Configurable shock absorbers, vehicle power DC10.5 V - DC18V</li> <li>Using the third generation of high power infrared lamp, with multiple sets of Angle, brightness can be adjusted to realized maximize lighting</li> <li>Infrared lamp and camera really realize the three tank isolation which solved the problem of infrared lamp aging and ball machine lens fog problem</li> </ul>	<ul style="list-style-type: none"> <li>Infrared irradiation distance: 120-150 -m (infrared type FT-3022A7)</li> <li>Laser distance: 300-400 -m (laser type FT-3022A7-J)</li> <li>Telephoto speed limit:support</li> <li>Power off memory: support</li> <li>Position coordinates information display: support</li> <li>Temperature display function: support</li> <li>Power supply: - DC18V DC10.8 V</li> <li>Power consumption: infrared 50 w, 30 w laser</li> <li>Working temperature and humidity: - 30 °C to 65 °C humidity less than 90%</li> <li>Protection grade: IP66 (outdoor), TVS4000V lightning protection, surge, the surge</li> <li>Weight: 6 kg</li> </ul>
<b>Intelligent IR PTZ camera</b> <b>FT-3023A7</b>		<ul style="list-style-type: none"> <li>Using highly integrated 16-bit processor, lower power consumption and stronger steable. OSRAM high intensity light-emitting chip.</li> <li>Using 0.9°precision motor-driven that low stable and runs smooth no jitter . adapt of industrial-grade components, suitable for all kinds of vile weather;</li> <li>Used for video conference system</li> <li>Combined with powerful magnet, used for portable outdoor vehicle monitoring</li> <li>Work with shock absorbers fixed to achieve vehicle monitoring all day</li> </ul>	<ul style="list-style-type: none"> <li>Horizontal manual control speed: 0°~220°/S</li> <li>Vertical manual control speed: 0°~90°/S</li> <li>Preset point: 256 pcs preset point</li> <li>Relative humidity: 90%</li> <li>Protection rating: IP66</li> <li>Working temperature: -35°C~+75°C</li> <li>Power input: DC11V ~ DC18V</li> <li>GW: 2.5KG</li> </ul>

## Special Accessories

Name & Model	Appearance	Features	Parameters
SATA HDD Reader ft-150series		<ul style="list-style-type: none"> <li>• Metal Shell</li> <li>• Mini Size, easy to take</li> <li>• Easy and direct to read the videos in SATA HDD via USB on PC</li> </ul>	<ul style="list-style-type: none"> <li>• Input voltage: DCSV</li> <li>• Port: USB2.0</li> <li>• Dimension: 80mm(L)×64mm(W)×26mm(H)</li> </ul>
Car Power		<ul style="list-style-type: none"> <li>• Features: Metal Shell, Hard Broken</li> <li>• Mini Size, easy to take</li> <li>• Wide voltage input, supply stable power for MDVR,Cameras,Pickup,Monitor etc</li> </ul>	<ul style="list-style-type: none"> <li>• Input Voltage:DC6-36V</li> <li>• Output Voltage:DC12V</li> <li>• Output Current:10A</li> <li>• Dimension:100mm(L)X100mm(W)X35mm(T)</li> </ul>
Pick Up ft-192 series		<ul style="list-style-type: none"> <li>• Mini Size, high sensitive, low noise</li> <li>• Wide working voltage, Built-in positive protecting circuit, avoiding burned machine.</li> <li>• Great front drive ability, long signal transmission</li> <li>• The reductive voice more clear, realistic and sweet-sound.</li> <li>• Compact size, suitable to surface mounted</li> </ul>	<ul style="list-style-type: none"> <li>• Working Voltage:9V~14V</li> <li>• Working Current:5mA~60mA</li> <li>• Sensitivity:200 mA/ubar</li> <li>• Frequency:50HZ~10000HZ</li> <li>• Max Output Voltage:5V-upp</li> </ul>
Panic Button ft-195 series		<ul style="list-style-type: none"> <li>• Metal Shell, Mini Size, easy to mount</li> <li>• Connecting with the Alarm input port of the MDVR for panic alarm.</li> </ul>	<ul style="list-style-type: none"> <li>• contactor:1 set open contactor 1 set close contactor</li> <li>• Dimension:76mm(L)X23mm(W)X14mm(H)</li> </ul>
Alarm Light ft-196 series		<ul style="list-style-type: none"> <li>• Plastic shell, Mini Size, easy to mount</li> <li>• Connecting with alarm input port of the MDVR to inform the emergency</li> </ul>	<ul style="list-style-type: none"> <li>• Output voltage:DC12V/200mA</li> <li>• Dimension:73mm(DM)X38mm(H)</li> </ul>
Outer Box ft-166 series		<ul style="list-style-type: none"> <li>• Metal Shell, hard broken</li> <li>• The fixed holes match the MDVR, safe and reliable</li> <li>• Look perfect and tide as MDVR connecting cable hidden</li> <li>• With keys for the security</li> </ul>	<ul style="list-style-type: none"> <li>• Dimension: 280mm(L) x 280mm(W) x 84mm(H)</li> </ul>
Vehicle PTZ Keyboard ft-181		<ul style="list-style-type: none"> <li>• Compact size, suitable for patrol cars, mobile police cars and other mobile systems using.</li> <li>• Three-dimensional joystick, achieve more functionality by smaller size.</li> <li>• Specifically for automotive using, low power consumption.</li> <li>• Infinitely variable-speed control speed dome rotation</li> </ul>	<ul style="list-style-type: none"> <li>• Communication protocol:PELCO-D(or customize for customer)</li> <li>• Baud Rate:Default 9600bp or customize if needed</li> <li>• Control address:1</li> <li>• Communication way:RS485</li> <li>• Joystick control:3-dimensional(up, down, left, right, zoom)</li> <li>• Woking power:DC12V</li> <li>• Power consumption:6W</li> </ul>
Vehicle PTZ Installation bracket ft -185		<ul style="list-style-type: none"> <li>• Metal material, durable, free from destroying</li> <li>• Mounting holes available for matching with PTZ, secure and reliable</li> <li>• Used for different vehicle by adjusting the iron</li> </ul>	<ul style="list-style-type: none"> <li>• Dimensions: 850mm ( L ) * 205 ( W ) * 190mm ( H )</li> </ul>
LED Small Panel ft-198		<ul style="list-style-type: none"> <li>• Extend accessory of remote control of the main engine and indicator light</li> <li>• Long extension control distance, can reach 5 to 10 meters</li> <li>• Complete indicator of the main engine status, such as power,alarming,video loss,video status</li> <li>• Elegant apperance, convenient to install</li> </ul>	<ul style="list-style-type: none"> <li>• Technical parameters:</li> <li>• Input voltage:DV12V</li> <li>• Working current:50 mA (12V)</li> <li>• Data connector:RS485</li> <li>• Working temperature:-40°C-80°C</li> <li>• Size:45mm(L)×35mm(W)×20mm(H)</li> </ul>



## Special Accessories

Name & Model	Appearance	Features	Parameters																				
Fire Box ft-525		<ul style="list-style-type: none"> <li>With strong &amp; anti-corrosion steel box body can protect the security of the data effectively</li> <li>Using nano insulation materials, with high temperature resistant function, can protect the SD card for 20 mins when suffering 600°C high temperature.</li> <li>Built-in professional industrial-strength SD card, 64GB max.</li> <li>With the specific tech of waterproof, dustproof, explosion-proof technology, more safer and reliable</li> <li>Aviation connector to achieve the external mirror image video recording</li> </ul>	<ul style="list-style-type: none"> <li>Capacity for SD card: 8G, 16G, 32G option</li> <li>Recording mode: External mirror image recording</li> <li>Data interface: USB2.0</li> <li>High temperature performance: can protect SD card for 20 mins when suffering 600°C high temperature</li> <li>Protection Grade: IP67</li> <li>Size: 145mmx90mmx70mm</li> </ul>																				
Oil consumption collector ft-541		<ul style="list-style-type: none"> <li>High detection accuracy:0.1mm oil level height measurement, ±0.5% precision error</li> <li>Good long-term stability: Adopts the method of ultrasonic measurement</li> <li>Easy to install and maintain: Just put the ultrasonic probe at the bottom of the tank outside</li> <li>Environmental protection &amp; non-pollution: Small Energy consumption, non-contact measurement</li> <li>High reliability: Can work normally in the harsh environment.</li> </ul>	<ul style="list-style-type: none"> <li>Working Voltage: DC9-36V</li> <li>Measuring distance: 4cm - 100cm</li> <li>Resolution: 0.1mm</li> <li>Measurement: 0.5%</li> <li>Working temperature: -40~80°C</li> <li>Protection Grade: IP66</li> </ul>																				
OBD module ft-540		<ul style="list-style-type: none"> <li>standard OBDII port, Covering all major automobile protocol,</li> <li>all database will return as numerical methods,</li> <li>Algorithm for accurate mileage. Accuracy 99.5%.</li> <li>Supports instant fuel consumption, average fuel consumption and fuel consumption data.</li> <li>Support vehicle diagnostic fault codes, two instructions to complete the fault codes read and erase.</li> <li>Support sudden acceleration and nasty slowdown etc</li> </ul>	<table border="1"> <thead> <tr> <th>Serial number</th> <th>Protocol name</th> <th>Protocol standard</th> </tr> </thead> <tbody> <tr> <td>1</td> <td>ISO9141-2</td> <td>ISO9141</td> </tr> <tr> <td>2</td> <td>KWP2000-5BPS</td> <td rowspan="2">ISO 14230</td> </tr> <tr> <td>3</td> <td>KWP2000-FAST</td> </tr> <tr> <td>4</td> <td>CAN BUS-11B-500K</td> <td rowspan="4">ISO15765</td> </tr> <tr> <td>5</td> <td>CAN BUS-29B-500K</td> </tr> <tr> <td>6</td> <td>CAN BUS-11B-250K</td> </tr> <tr> <td>7</td> <td>CAN BUS-29B-250K</td> </tr> </tbody> </table>	Serial number	Protocol name	Protocol standard	1	ISO9141-2	ISO9141	2	KWP2000-5BPS	ISO 14230	3	KWP2000-FAST	4	CAN BUS-11B-500K	ISO15765	5	CAN BUS-29B-500K	6	CAN BUS-11B-250K	7	CAN BUS-29B-250K
Serial number	Protocol name	Protocol standard																					
1	ISO9141-2	ISO9141																					
2	KWP2000-5BPS	ISO 14230																					
3	KWP2000-FAST																						
4	CAN BUS-11B-500K	ISO15765																					
5	CAN BUS-29B-500K																						
6	CAN BUS-11B-250K																						
7	CAN BUS-29B-250K																						
LED Monitor ft-196		<ul style="list-style-type: none"> <li>Fully meet the on-board voltage requirements, Voltage range: DC9-36V</li> <li>Standard common interface protocol:RS232/RS485</li> <li>Throughout the day can be divided into 8 hours 7-level brightness adjustment</li> <li>Advertisements expire automatically deleted without consumption flows, comes with alarm function.</li> <li>Supports Instant Messaging insertion support synchronized display of information.</li> </ul>	<ul style="list-style-type: none"> <li>Pixel spacing: 6mm 7.62mm 10mm</li> <li>physical densities: 2048/set</li> <li>color: red, yellow, green, blue, white,</li> <li>optimum viewing distance: 10-30M</li> <li>ambient temperature:-30 °C ~ 70 °C</li> <li>operating voltage: DC8~36V</li> </ul>																				
CAR UPS POWER ft -161		<ul style="list-style-type: none"> <li>Pure sine wave output, always loaded with a full range of protection and high quality sine wave power supply.</li> <li>High input power factor, high load capacity.</li> <li>Wide input range input voltage range: DC8-36V.</li> <li>The most advanced intelligent battery management, the most effective protection of the battery life.</li> <li>Perfect protection measures. Output short circuit protection, overload protection</li> </ul>	<ul style="list-style-type: none"> <li>Rated capacity: 12V/1400mA</li> <li>input voltage: DC 8~36V</li> <li>output voltage: 12V</li> <li>standby time: ≥ 20 min</li> <li>charge time: ≤ 4 hours</li> <li>Max discharging current: 5A</li> </ul>																				
Fuel and Power cut off controller ft-199		<ul style="list-style-type: none"> <li>Switch the power load, impact resistance, high vibration resistance</li> <li>Able to withstand sand and dust, water, salt, oil, against vibration and shock</li> <li>Ambient temperature range:-40°C ~ 85°C</li> <li>Suction voltage:V ≤ 60%VH(Fixed voltage);Coil voltage allowed 1.5VH</li> <li>Has two States: normally closed, normally open optional</li> </ul>	<ul style="list-style-type: none"> <li>Pull-in time:9ms</li> <li>Release time: 7ms</li> <li>Insulation resistance:100MΩ ~ at500VDC, 50%RH</li> <li>dielectric strength: 500Vms, 1min</li> <li>Impact: 20g, 11ms</li> <li>Working environment temperature:-40°C ~125°C</li> </ul>																				
Capacitance oil mass inductor		<ul style="list-style-type: none"> <li>High resolution and measurement accuracy</li> <li>No need for manual intervention,automatic calibration,can correctly output accurate liquid level height signal.</li> <li>Measurement medium:diesel,gasoline,corrosion resistant</li> </ul>	<ul style="list-style-type: none"> <li>Detection range:0.05-1m</li> <li>Medium temperature:-50-125°C</li> <li>Supply voltage:12-28VDC</li> <li>Mounting:thread M16*1 or flanged mounting,can customize special requirement</li> <li>Ground pole diameter:Φ16</li> </ul>																				

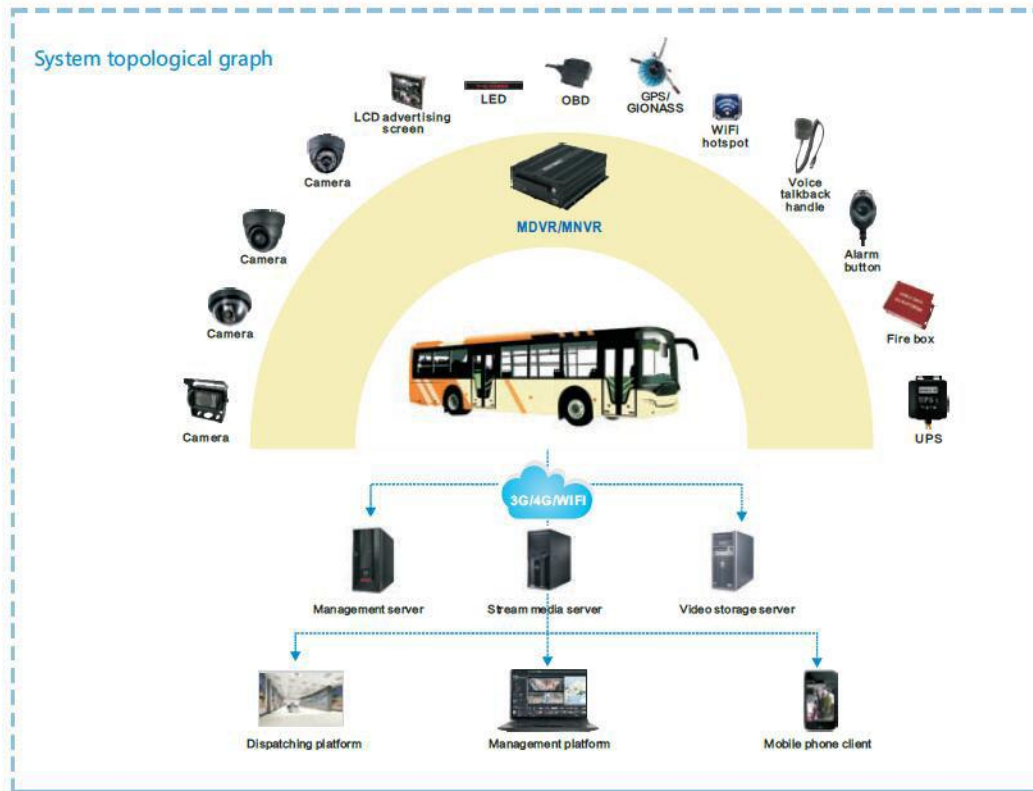
# System solutions





## 1 Public bus wireless video monitoring system solution

- Each bus install four (HD 1080P) cameras, 1 fireproof box and 1 panic button for driver.
- The panic button triggered alarm can be sent to the platform
- Support users remotely taking JPEG pictures and saved in server
- Support GPS/GLONASS modules, with high accuracy
- Support 3G/4G, monitoring center can check live data anytime.
- Big capacity 2TB for data storage, no need to format.Plug and play.
- The fireproof box with built-in 32GB SD,making recorded videos simultaneously saved in it. When there is a fire accident, the videos can be played completely without any damage, which provides a very effective evidence.
- Through the center platform, supervisors can manage all the buses' conditions in full aspects to avoid different kinds of possible accidents.





## 2 Public bus intelligent dispatching system solution

- Each public bus installs five cameras (HD 1080P), one fire box , one sound pick up & 1 alarm button, also can extend to connect with LED (for advertising promotion), dispatching board ( with bus stop reporter) and people counting camera.
- Driver alarm button can support alarm on network platform.
- Support user JPEG images capture by management platform remotely and pictures can be stored in the server.
- Support GPS/ GLONASS dual modules positioning with higher location accuracy.
- Command center can operate the vehicle at any time by using 3G/ 4G
- Wifi hotspot built-in to achieve passenger view browser (max support 50 users)
- Support 2 TB Hard disk recording, no need format. Plug and play.
- Install fireproof box boxes, insert 32GB SD card ,to achieve HDD and SD card video recording storage at the same time.when vehicle catches fire. It also can guarantee the storage data in the fire box playback completely and provide the evidence for the accidents.
- The supervisor can master the bus running status in all directions and eliminate all kinds of security risks effectively through monitoring management platform.
- Extending LED by RS232 can update the advertisements contents , bus driving routes and running prompt.
- Can extend people counting system camera to statistic each platform getting on and off flow conditions , offering reference to data management for preventing tickets fee loss effectively.
- Support manual and automatic station report,built-in RFID module,support check on work attendance function of drivers.

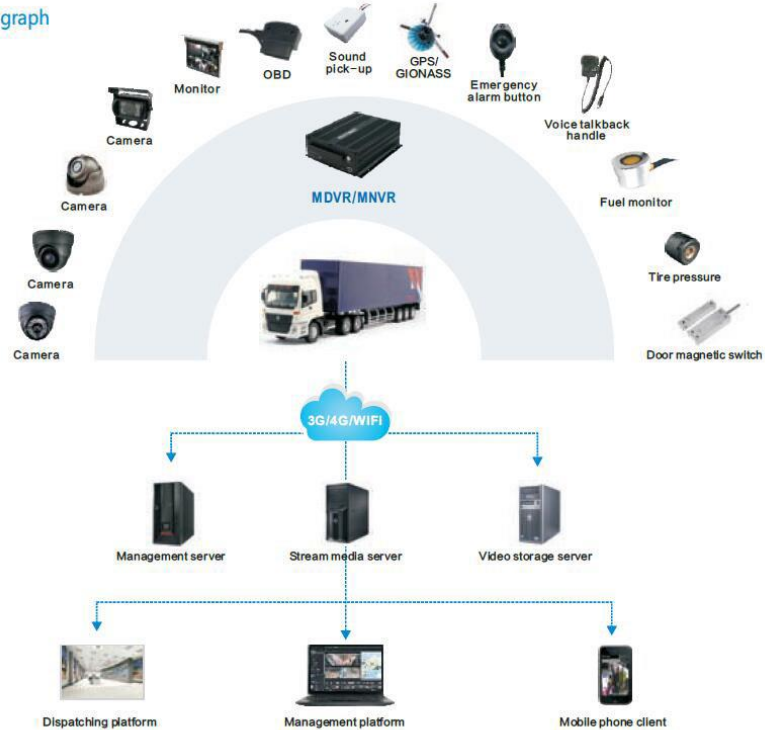




### 3 Logistics transport vehicle monitoring system solutions

- Each vehicle installs four cameras (HD 1080P),real-time monitor front of vehicle,driver,vehicle inside,reversing rear view,protecting driving safety.
- The driver can trigger the alarm button in case of emergency incident and the signal will be transmitted to monitoring control center.
- Support JPEG format image capture remotely through cms platform and pictures will be stored on the server
- Support GPS/GLONASS dual-mode position with higher positioning accuracy.
- Command center can operate the vehicle at any time by using 3G/ 4G.
- Support 2 TB hard disk recording, no need format. Plug and play.
- The supervisor can master vehicles running status in all directions and eliminate all kinds of security risks effectively through monitoring management platform.
- Can extend fuel consumption statistical instrument,statistical fuel consumption status. Monitoring oil stealing phenomenon effectively.
- Support 1080P recording. Can support max 4CH/8CH 1080P HD video recording without any delay.
- Full HD video surveillance make logistics and transport chain clear and transparent. It also can strengthen emergency trace-ability to prevent goods loss effectively.
- Can extend Tire Pressure detector,real-time monitor tire pressure and temperature variation,preventing tire burst and air leakage,protecting driving safety.
- Can extend magnetic switch,real-time monitor tailstock door open or close status,preventing opening door on halfway,protecting goods safety.

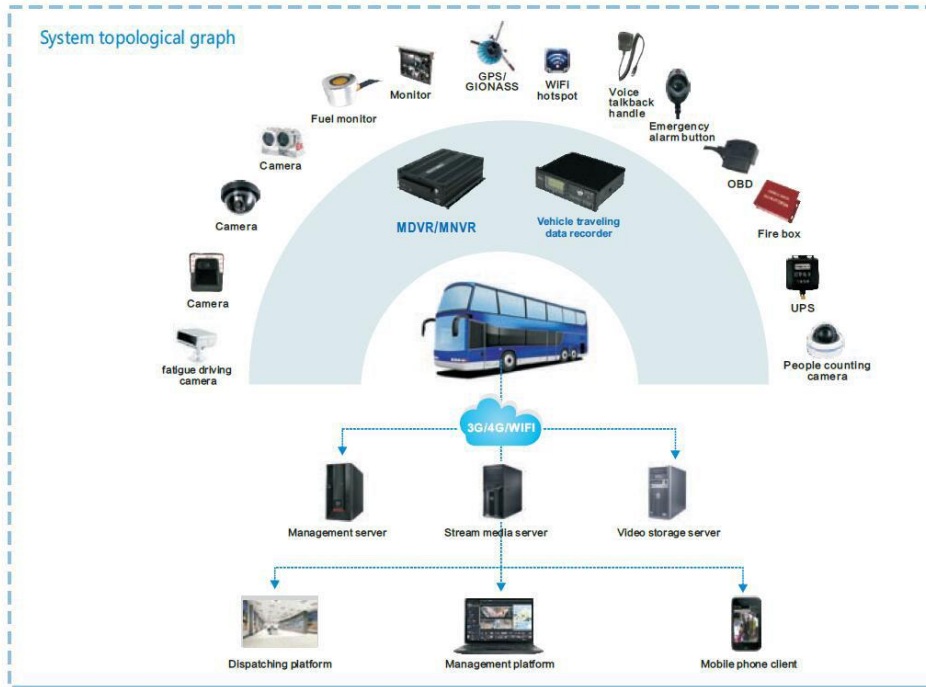
System topological graph





#### 4 Passenger vehicles and transport vehicles monitoring system solution

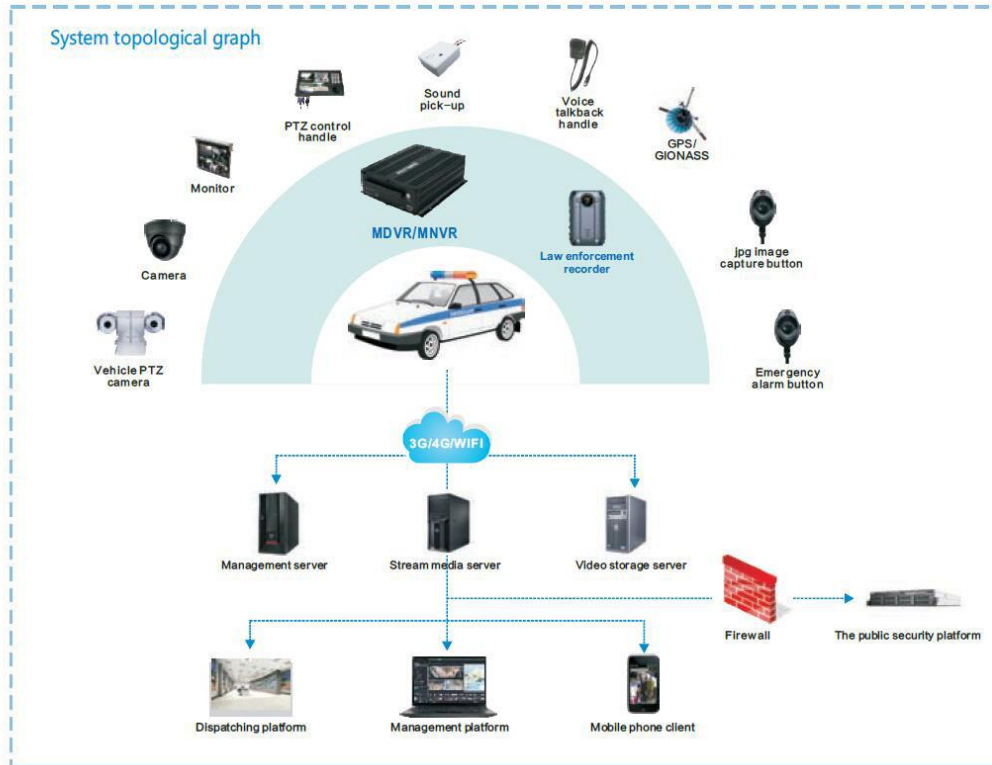
- Each bus install five cameras(HD 1080P), one Fire box, one sound pick-up, one driver alarm button and one people counting camera.
- The driver can trigger the alarm button in case of emergency incident and the signal will be transmitted to monitoring control center immediately.
- Support JPEG image capture remotely through CMS platform and pictures will be stored in the server
- Support GPS/GLONASS dual-mode position with higher location accuracy.
- Command center can operate the vehicle at any time by using 3G/4G.
- Wifi hotspot built-in to achieve passenger view browser (max support 50 user)
- Support 2 TB hard disk recording, don't requite format. Plug and play.
- Install fire boxes, insert 32GB SD card ,to achieve HDD and SD card video recording storage at the same time.when vehicle catches fire. It also can guarantee the storage data in the fire box playback completely and provide the evidence for the accidents.
- The supervisor can master the bus running status in all directions and eliminate all kinds of security risks effectively through monitoring management platform.
- Can extend people counting system camera to statistic each platform getting on and off flow conditions , offering reference to data management for preventing tickets fee loss effectively.
- Can extend ultrasonic fuel consumption sensor,real-time monitor oil consumption status of vehicles,preventing oil spilling and oil stealing,optimizing enterprise operation costs.
- Can extend fatigue driving pre-warning system,real-time detect fatigue and distraction status of drivers,providing safe assurance service for drivers and operation companies.





## 5 Police law enforcement vehicles forensics system solution

- Each car installs one vehicle PTZ camera (1080P-SDI/AHD),one indoor camera with audio(1080P-SDI/AHD),one emergency reinforce alarm button,one emergency JPEG image capture button,one voice talk-back handle,one 7 inch monitor with PTZ control rocker,law enforcement recorder device is optional.
- Trigger emergency reinforce alarm button,command center platform software can immediately receive alarm info of law enforcement vehicles need reinforce,then arrange nearest patrol vehicle to go to reinforce.
- If law-enforcement officers meet unlawful act,they can trigger button of JPEG image capture,can save the images in remote server immediately.
- Support GPS/ GLONASS dual modules positioning with higher location accuracy.
- Command center can operate the vehicle at any time by using 3G/ 4G
- Support 360 degree rotary PTZ camera,can get accurate location,track and shoot various unlawful acts and law enforcement progress.
- Support max 4CH or 8CH 1080P HD recording,no delay.
- Support 2 TB Hard disk recording, no need format. Plug and play.
- Police law-enforcement officers can wear law enforcement recorder from our company,to record videos & audios,take pictures etc. Of unlawful acts.
- To extract law enforcement recording is convenient and fast.Multiple storage modes(HDD,server) is safer.Support scene playback and backup recording,download recording remotely,extract recording from server etc.
- Command center can unified manage and command police enforcement vehicles via platform,improving enforcement efficiency.

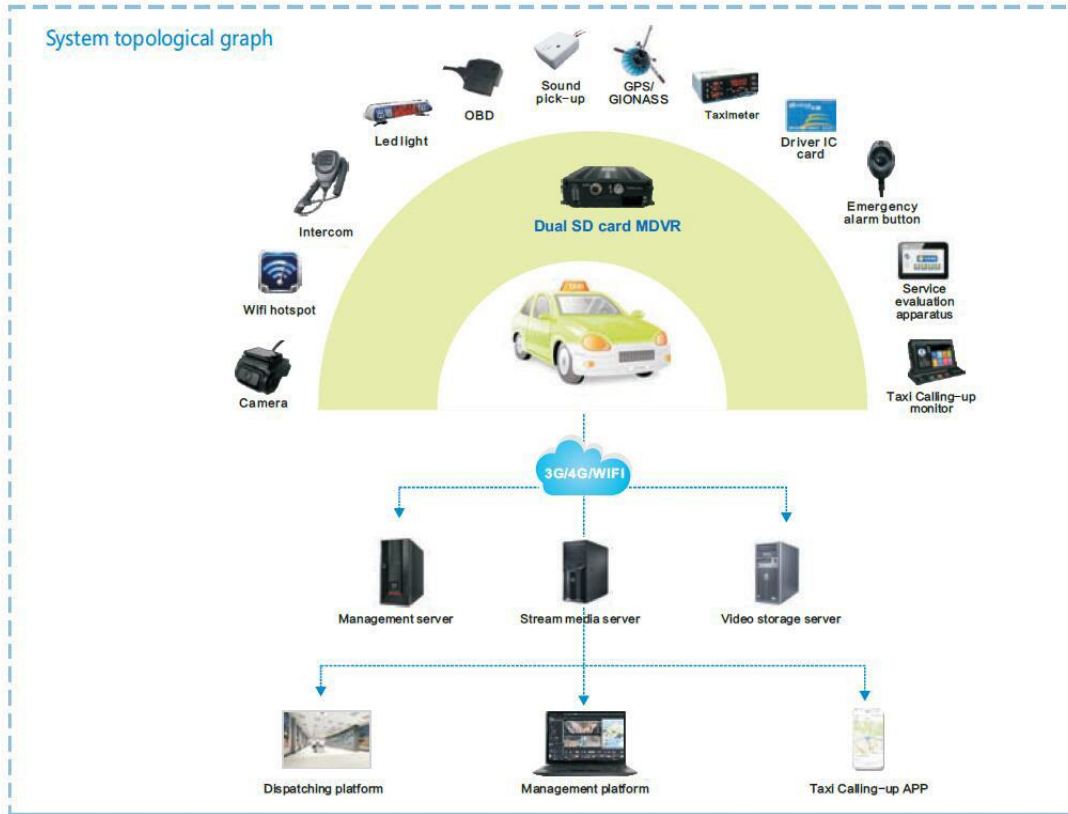




## 6 Taxi monitoring system solution ( Working with Taxi on-calling system)

- Each vehicle install four cameras, real-time monitor front of vehicle, front row passengers, back row passengers, trunk.
- Driver alarm button can support alarm on network platform.
- Support passengers JPEG image capture and pictures can be stored in the server.
- Support GPS/ BD dual modules positioning with higher location accuracy.
- Command center can operate the vehicle at any time by using 3G/ 4G.
- Support 2 X128GB SD cards
- The supervisor can master the bus running status in all directions and eliminate all kinds of security risks effectively through monitoring management platform
- Extending LED by RS232 can update the advertisements contents.
- Calling-up and guide system connected by RS-232, Mobile DVR can transmit the communication services between calling-up terminal screen and backstage.
- Detailed vehicle grouping and multilevel account management combined with the unified and diversified management mode perfectly.
- Can extend service evaluation device, record drivers' service quality, improving customers' satisfaction.

System topological graph





## Taxi Surveillance Solution

### NEW generation Android touch screen



Model: FT-JT1 (V3)

This powerful touch screen is perfect for taxi surveillance and fleet management. It's running on Android system, including lots of functions such as real-time video / recording, GPS tracking, network communication, on-board navigation, ADAS/DSM analysis, Face recognition, message notification, telephone, order list, payment record, etc. It is able to integrate with other accessories such as fare meter, LED advertisement panel, POS machine, driver panic button, service evaluator, Status LED displayer, speaker for extended functions.

#### Features:

- ★ Support 3G/4G network
- ★ 2 channels of 720P AHD video inputs, can be extended to 4 channels
- ★ 1 SD card, up to 256 GB
- ★ Support Wi-Fi hotspot
- ★ Support Face recognition
- ★ Support driver facial login system
- ★ Support ADAS / DSM (optional)
- ★ Internal GPS, 3G / 4G, Bluetooth module (support Bluetooth headset / OBD)
- ★ Support RFID card-reader for driver ID card verification
- ★ With service evaluation button
- ★ Support on-board navigation, message notification from center, telephone, live video, order list, payment record, and able to integrate with other accessories such as fare meter, LED advertisement panel, POS machine, driver panic button, service evaluator, Status LED displayer for extended functions.
- ★ Support driver facial login system
- ★ Multiple alarm reports and business reports
- ★ Support uninterrupted Audio recording, small file size for download
- ★ On-board power-off delay for data protection
- ★ 9V~36V wide voltage power supply

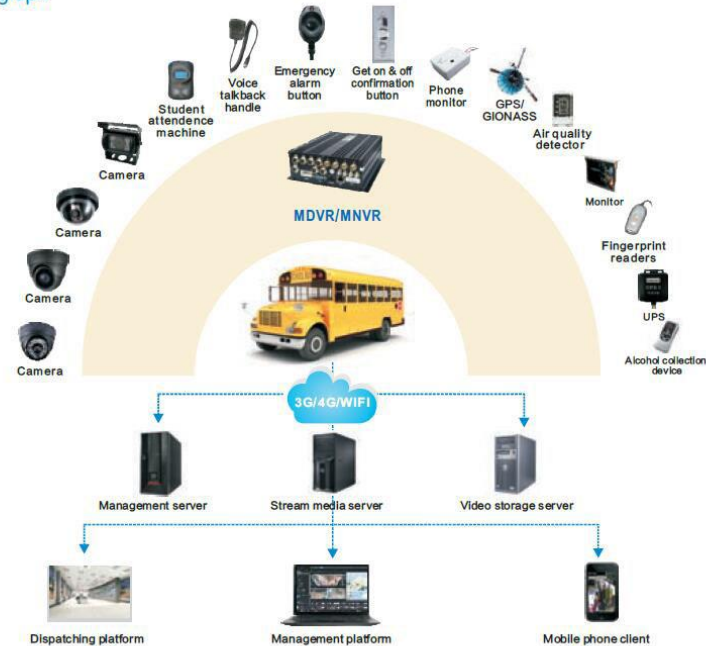




## School bus security system solution

- Each vehicle install five cameras, a telephone monitoring pickup, a voice talk-back handle, a drive alarm button, a students get-off car alarm button, a alarm light (with siren function),one fireproof box,one oil cut-off electric control relay.
- Driver alarm button can support network platform, SMS and a key telephone trigger for emergency rescuing more timely.
- Use RFID technology to transmit RFID card information of students get on & off to vehicle intelligence terminal,vehicle intelligence terminal will record remotely and local at the same time, support continue transmission after break-point.
- Support students get on & off JPEG image capture function and pictures can be stored in the server.
- Support GPS/ GLONASS dual model positioning with higher location accuracy.
- Command center can monitor the vehicle any time by 3G/ 4G.
- Support 2 TB hard disk recording, no need format. Plug and play.
- Equipped with a "confirm button of all students get on & off bus " mandatory confirmation student has been off to prevent student left on the vehicle. Send SMS to parents timely,include the time of get on and off and position . Help parents keep track of their kids' status. If driver do not do this confirmation,vehicle extinction directly, monitoring center will receive warning messages, siren sounds and lights flash on the vehicle.
- Install fireproof box,built-in 32GB SD card ,to achieve HDD and SD card video recording storage at the same time.when vehicle catches fire. It also can guarantee the storage data in the fire box playback completely and provide the evidence for the accidents.
- All school buses running will be controlled by managers and supervisors by control center management platform.
- Easily and accurately to find out each student RFID recording from completed students RFID information form.
- Fast getting each bus detail information from customized vehicle information report form.

### System topological graph



# MDVR-classic models



Model:

# FT VMR-HN87

3G/GPS/WiFi for option

Support 2 x SD Cards (Max 128GB for each card)



Bus



Police car



Truck



Train



Private car



Security screws

Running indicator

Recording indicator



## 4 Channel D1 Dual SD Cards Mobile DVR



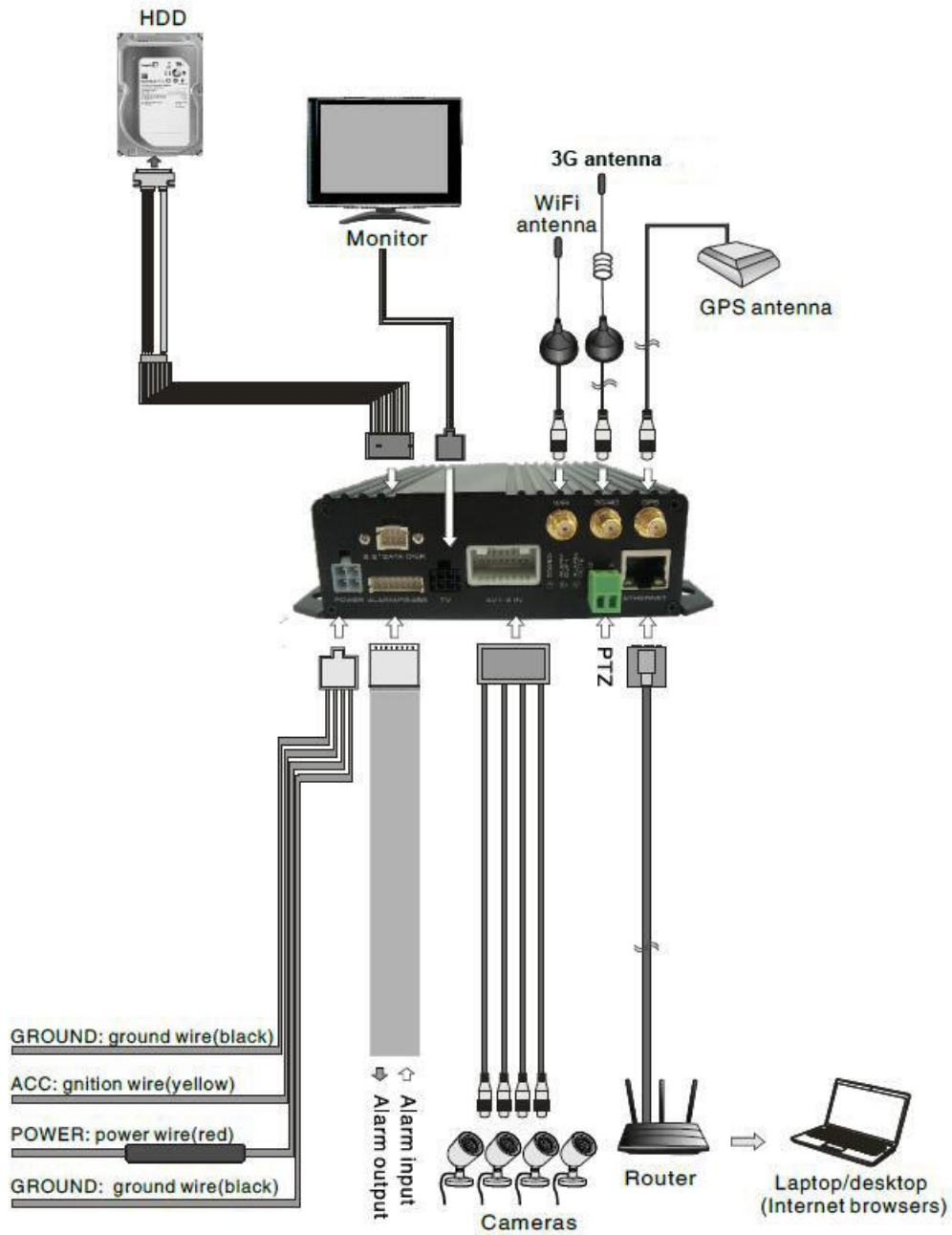
Front

## Classic Model: FT VMR-HN87 series (SC VMR-HN87 series)



Back

# Connecting diagram



4CH Full D1 Mini HDD Mobile DVR

Model:

# FT VMR-H40

4G/3G/GPS/WiFi for option

Support 1 x HDD (4TB in Max)

**MAX4TB**



Bus



Police car



Truck



Train



more

4 Channel D1 HDD (Hard Disk) Mobile DVR

Classic Models: FT VMR-H40 series (4 channels) / FT-VMR-HD80 series (8 channels)



Front



Back

# 4 Channels D1 HDD Mobile DVR & Its Full Accessories

## Hd40 Accessories List



GPS ( Optional )



Combined control wire



anti-shake kits



3G/4G Antenna (Optional)



AV input cable with aviation connector or RCA connector



WiFi Antenna (Optional)



One power cable with fuse



user manual



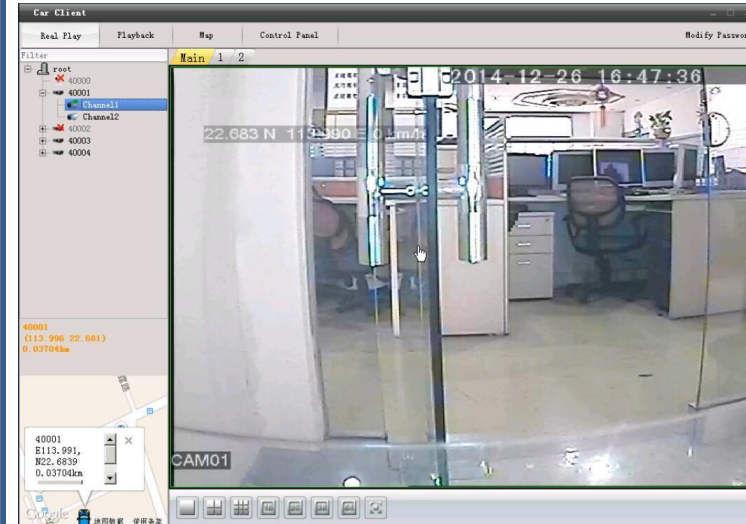
Key

# Platform Softwares——MyEye

(for Playback (Vplayer), Local /Cloud Monitoring (CMS), Remote Real-Time Video Monitoring / Downloading (Car\_Client), Server (Car\_Server))



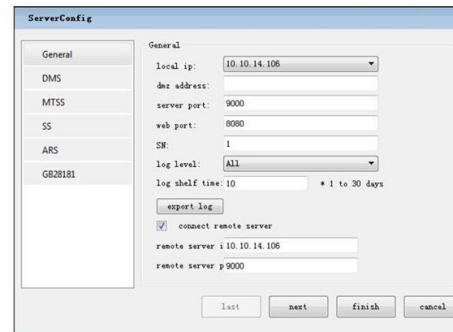
Playback Software Interface



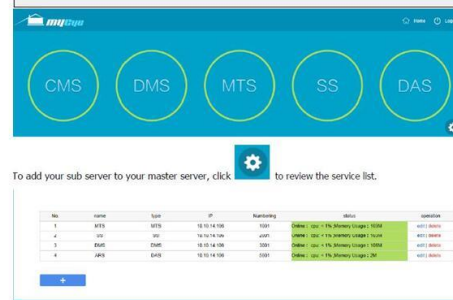
MyEye Client (Car\_Client)



CMS Software Interface



MyEye Server  
(Car\_Server)



Software for  
Server's settings  
and  
Configuration





# Mini MDVR (Mobile DVR)

# 4 Channels or 8 Hybrid channels (4CH AHD cameras + 4CH Digital cameras)

## 1080P Mini Hard Disk MDVR

(models: 4CH: FT-DVR 9804 series / 8 hybrid CH: FT-DVR-9844 series )



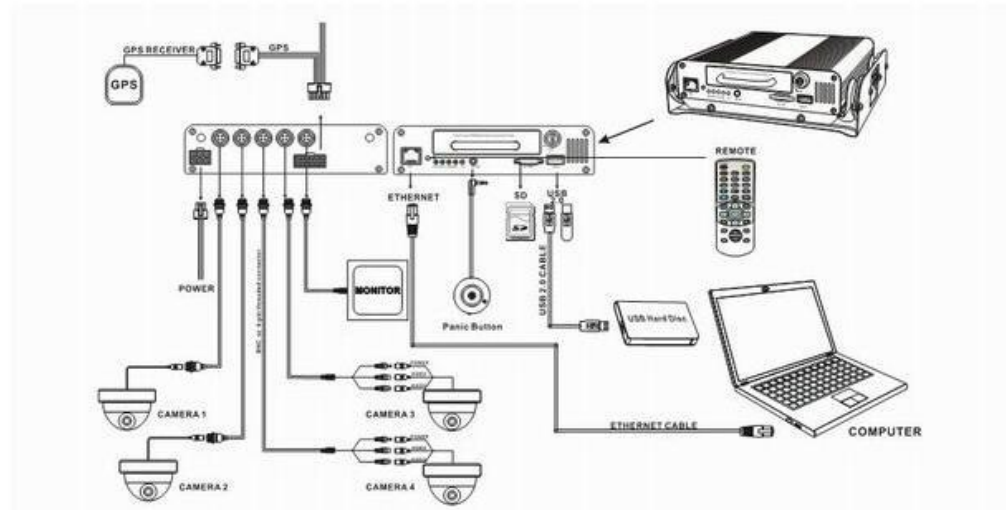
### MAIN FEATURES:

1. High video quality based on the H.264 High Profile.
2. High resolution recording. Up to mega-pixel for 4 channels (1280 x 1024) or 8 hybrid channels (1280 x1024).
3. Compact size, much easier for installation.
4. Support from 8VDC to 32VDC, applicable for 12VDC and 24DC vehicles.
5. The recorder provides each camera with stable +12V DC power; DVR can detect the short cut on power circuit.
6. Can use ignition to control the power. Configurable power timer after ignition is off.
7. Support automatic record, event trigger record, schedule record.
8. Can record speed with audio and video. Support overspeed alarm.
9. Support 3 sensors, can record brake, return, right turn, left turn light status into the record file.
10. Use avi format for record file. Compatible with different player software.
11. Support FAT32 file system, record file can be read directly on Windows, Linux.

## User Interface



## System Architecture



## Standard Accessories



Hard disk mobile DVR , 1 pcs



AV Input Cable  
4 channels DVR : 2 pcs  
2 channels DVR : 2 pcs  
1 channel DVR : 1 pc



AV Output Cable, 1 pcs



Signal Cable, 1 pc



Power Input Cable, 1 pc



3A fuse, 1 set



Remote Controller, 1 pcs



Player Software, 1 set, burned in CD

## Optional Accessories



GPS Receiver



Panic Button



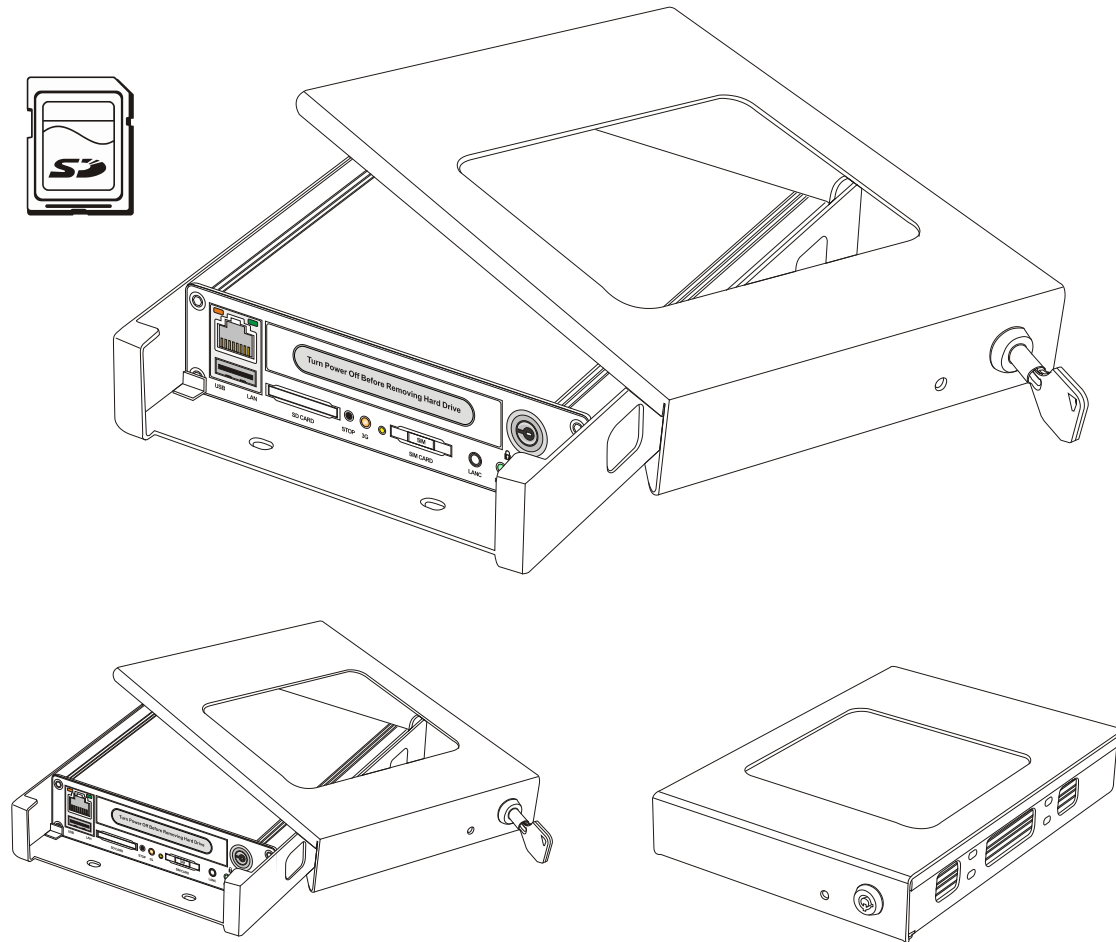
USB Reader



Backup Power Supply



## Unlock MDVR to install SD card & Hard Disk



# 4 Channels 1080P SD Card Mini MDVR (FT-SDVR 104 series)



## MAIN FEATURES:

1. High video quality based on the **H.265** High Profile.
2. High resolution recording. Up to mega-pixel for 4 channel (1280 x 1024) and D1 resolution for 1 channel (704x576).
3. Compact size, much easier for installation.
4. Support from 8VDC to 32VDC, applicable for 12VDC and 24DC vehicles.
5. The recorder provides each camera with stable +12V DC power; DVR can detect the short cut on power circuit.
6. Can use ignition to control the power. Configurable power timer after ignition is off.
7. Support automatic record, event trigger record, schedule record.
8. Can record speed with audio and video. Support overspeed alarm.
9. Support 3 sensors, can record brake, return, right turn, left turn light status into the record file.
10. Use avi format for record file. Compatible with different player software.
11. Support FAT32 file system, record file can be read directly on Windows, Linux.

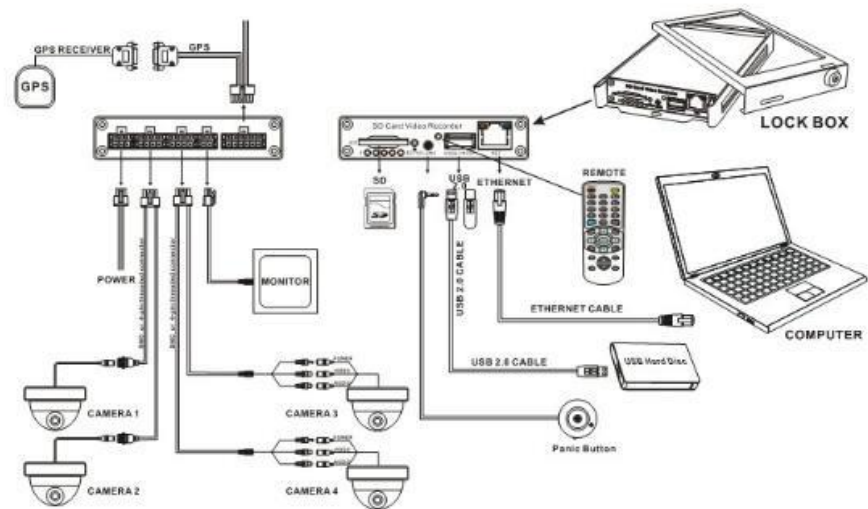




## User Interface



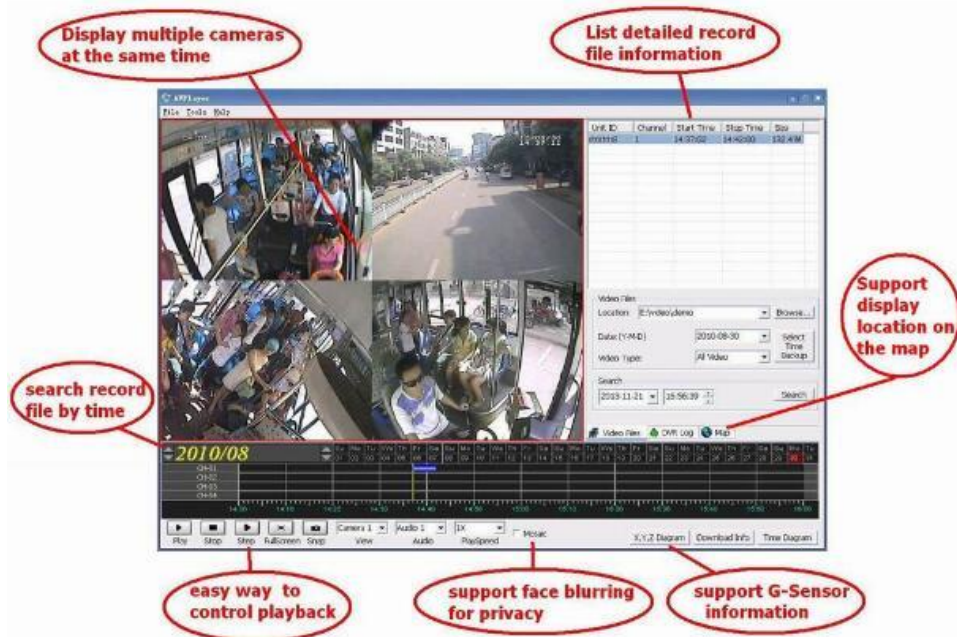
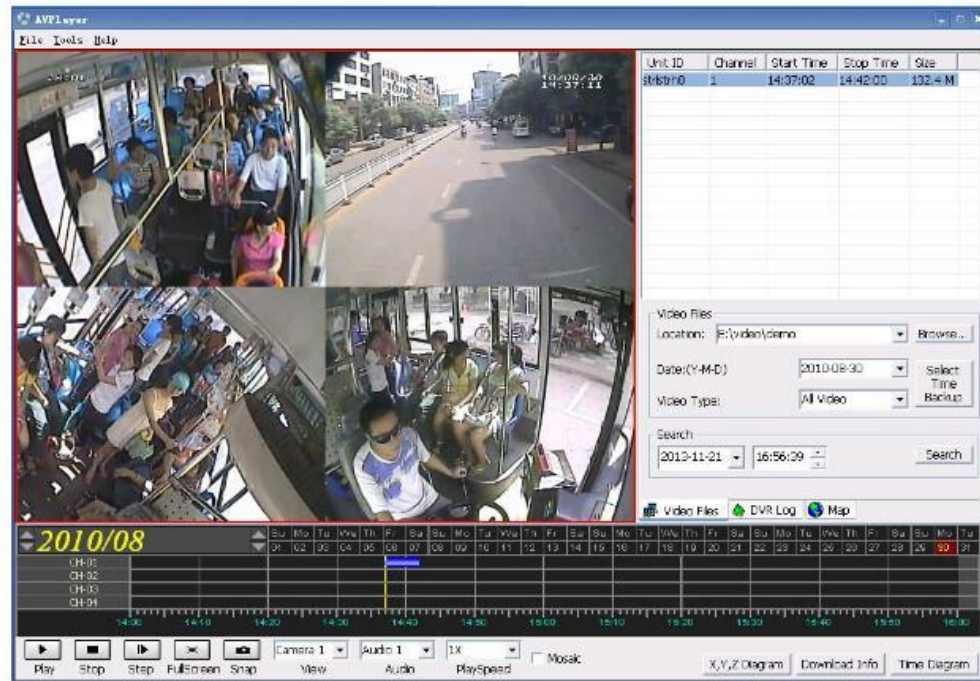
## System Architecture



# Video Demo



# Player Software



support file encryption for record file

support file integrity check for record file



Support Display G-Sensor Data diagram

display the x, y, z axis data with different color

## Standard Accessories



SD Card Video Recorder, 1 pc



Lock Box, 1 pc



AV Input Cable  
4 channels DVR : 2 pcs  
2 channels DVR : 2 pcs  
1 channel DVR : 1 pc



AV Output Cable, 1 pc



Signal Cable, 1 pc



Power Input Cable, 1 pc



3A fuse, 1 set



Remote Controller, 1 pc

## Optional Accessories



GPS Receiver



Panic Button



Backup Power Supply



AV Extension Cable

# Portable Mini Modular All-In-One Mobile DVR





Additional Camera (connected externally)



UPS Battery

## Products Features:

1. Industrial level system, reliable electromagnetic compatibility design, ensure the stable work of whole system
2. Anti-disassembly and dustproof structure, interfaces and mount equipped with protective cover
3. Built in 1CH 1080P/720P AHD camera, support 1CH additional AHD camera(max 1080p)
4. Monitoring angle of cameras can be adjusted flexibly, applicable to different monitoring angles and vehicle type
5. Built in high sensitivity MIC for recording the audio in the car, integrated speaker for audio broadcast and warning prompt
6. Integrated 6 indicator lights for observing the device state
7. Integrated 1 panic button, 1 power button and 1 WIFI station and AP mode switch key.
8. Support direct connection with Phone for configuration, video download and preview.
9. Bluetooth module for option, support wireless headset for intercommunication and Phone call
10. Built in wifi module for autodownload and AP function for sharing hot spot
11. Built in GPS, 3/4G module for realtime monitoring
12. Support line off set and other driving rules alarm, up to 16 lines and areas
13. Built in G-sensor module for motion detection
14. 1CH video output, support monitor preview
15. Support 8-36V wide power input, support external UPS
16. Reliable file system ensures the accuracy and stability of video data
17. Support 1SD card and 1TF card(each max 128G), antishock design.
18. One High-speed USB interface for data back
19. Support 3CH IO input, 1CH RS232 or 1CH 485 and 1CH Can bus interface
20. TTS voice for reading the Chinese and English scheduling text info
21. Support capture alarm pictures manually. ACC delay Function

## Online Network Car Exclusive

# Mini Modular Million HD Mobile DVR

NK6M with mini size design, the whole device adopts industry grade plastic, light weight, portable with cheap transportation. In accordance with the installation design of online network car, maximum simplify installation, only connecting the power cable, stick on the windshield with professional 3M sticker. Modular and multi-combination design to meet more requirements, UPS backup power supply(Optional), can be equipped with external hanging camera. Mobile terminal device can directly connect with the Mobile DVR via WIFI, easy configuration/high integration with powerful function.  
Support 3G/4G/GPS/WIFI/Bluetooth/G-Sensor/Intercom/TTS etc...



## Specifications:

Model No		FT-DVR-NK6M
System	UI	Graphic Menu WIN8 User Interface
	OS	Embedded Linux Operating System
	Solution	HI3521A Chipset
Video&Audio Input	Video Input	2 Channel
	Audio Input	1 Channel
Video&Audio Output	Video Output	BNC
	Audio Output	1 Channel
Video &Audio Parameters	Video Compression Format	H.264
	Video Encoding Resolution	1080P/720P/D1/HD1/CIF
	Video Bit Rate	250kbps ~ 4096kbps
	Audio Compression Format	G.711A
Video Storage	Storage Type	Double SD Card
	3G/4G	Support
Network	WIFI	Support
	Bluetooth	Support
	AP	Support
	GPS/BD Positioning	Support
Function Interface	Serial Data Interface	1 Channel RS232/1 Channel RS485
	I/O Interface	3 Channel Alarm Input/
Other	Power	DC8-36V
	Consumption(Not include disk)	< 12W
	Operation Type	Remote Control/Smart Phone

# Pannel Definition (FT-DVR-NK6M)



Status Indicator



Integrate 1CH 1080P/720P Camera



1 CH Video Output, 12V 2A output USB Backup pret



Support Two SD Card ( Max 256GB each)



Front



Back

ITEM	Parameter	
OS	Linux	
Language	Chinese/English/Others (can be customized)	
Video Compression	H.264 Compression Mode	
OSD	Overlays information such as date time and vehicle ID	
GUI	Graphical User Interface	Connect to external LED screen. Setup system parameters with the remote control.
		Setup via Computer directly with WIFI Hotspot.
Recorder	Video Input	2 channels(1 channels built-in , 1Ch External) 1080P AHD HD / SD / Mixed Video Input
	Video Output	1CH AV output
	Preview	Support 1/2 channels full screen preview
	Resolution	Support 1080P/720P/D1/CIF, MAX:2CH 1080P
	Video Quality	0-7 levels, 0 is the highest level, 7 is the lowest level.
	Video Standard	PAL: 100f/s , CCIR625 line,50field; NTSC: 120f/s, CCIR525 line,60field; CIF: 256Kbps ~ 1.5Mbps, multi image quality optional; HD1: 600Kbps ~ 2.5Mbps, multi image quality optional; D1: 800Kbps ~ 3Mbps, multi image quality optional; 720P : 1Mbps~4Mbps, multi image quality optional; 1080P: 800Kbps-6Mbps, multi image quality optional;
Audio	Record Mode	Auto recording with ACC Power on. Timed recording, alarm recording and manual recording .
	Audio Input	2CH ,(1CH built-in , 1CH External)
	Audio Output	1 channel
Audio	Compression	G.726 compression

Alarm Input		1CH level Alarm Input
Communication Interface		1CH RS232 & 1 channel RS485
Wireless transfer		Support Built-in 3G network, WCDMA,CDMA2000,TD-SCDMA compatible with GPRS,EDGE; Support Built-in 4G network, TTD-LTE, FDD-LTE
Position		Support Built GPS/BD Module,can make playback analysis of vehicle routing
Video Storage	Storage	Max support 1X256GB SD Card
	Upgrade	Support USB flash disk updating,SD card upgrade , OTA remote upgrade automatically
Video Storage	File Format	H.264
	File System	Special Car system File System
Video Playback	Video Search	Search video by Record Time/Record Type etc
	Playback	Max support 2CH Replay /Stop/ Forward/Reverse Support x 2,x4,x8,x16. forward or backward play
Safety Management		User/Admin 2 Levels Different Passwords , support screen lock
TTS Voice Broadcasting		Support TTS voice broadcasting
Voltage & Power Consumption	Power Management	Adaptive wide power input, with overload, undervoltage, short circuit, reverse connection and other protection functions; Support the timer switch machine, delay shutdown function.
	Voltage Input	DC:+8V ~ +36V
	Voltage Output	12V @1.2A 1 channels,with IR 12V @0.9A 1channels,with IR
	Power-off Protection	UPS Technology,All video information can be saved automatically when the power is cut off, and make sure that all the files can not be damaged.
Working Environment	Power Consumption	Normal Working <10W, Standby state <0.5W
	Temperature	-20°C to +70°C
	Humidity	20% to 80%
others	Heater device	Build-In Hard disk Heater(Temperature Sensor)
	Size	125mm*130mm*150mm



## Mini Megapixels HD Mobile DVR Recorder

### Mini Modular AHD 1080P MDVR

KE6 Mini size (just bigger than a Cammera), portable with cheap transportation. Powerful function, High integration. Support 3G/4G, GPS, WIFI, BLUETOOTH, G-Sensor, Talkback, TTS...function. Easy installation: Stick on the windshield with professional 3M sticker, and connect the power. Convenient Maintance, the device are two parts with main and holder which disassembly freely. The Main part can work seperately with DC12V output. So any quality issue happen, just take off and check the main part, and change a new main part.



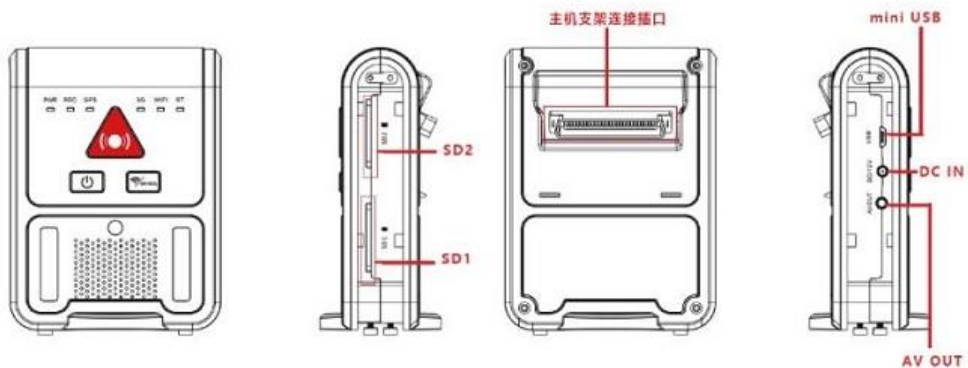
## Products Features:

- 1.high technology for thermal design upto 70°C workig temperature.
- 2.The whole industrial grade program, system design and reliable electromagnetic compatibility design, to ensure stable work and the stability of the peripheral electronic equipment.
- 3.The whole structure is designed for anti- tamper and dust-proof, to ensures preventing the SD, SIM card and antenna connectors from destroying.
- 4.The whole module adopts the embedded plug structure. They not only meets the requirements of convenient dis-assembly , but also protects the conditions of vehicle vibration.
- 5.Support IE, Phone APP, Ipad
- 6.The equipment integrated built-in 2 cameras 1080P with 2.0 Megapixels. (it supported external 2 cameras 1080P Camera [3rd and 4th Channels]).
- 7.The host device of the integrated infrared light for internal can achieve High definition surveillance under the condition without light.
- 8.Integrated with microphone (Inside car audio record)
- 9.Integrated with speaker (Audio broadcast and early warning)
- 10.Host device carry 6 status indication light (Survey equipment work status)
- 11.Build-in one video output (Achieved video preview and rear Review function via the connection of the monitor)
- 12.Support wide Voltage input (6V to 36V). Support Reverse Polarity Protection, over-voltage, over-current, overload protection. Support 12V output and 4A Current.
- 13.Support two SD Card ( Each SD support 128GB max. Auto loop recording )
- 14.Support TTS with Chinese, English broadcasting.
- 15.Working temperature:-40°C - 70°C

## Specifications:

Model No		FT-DVR-KE6
System	UI	Graphic Menu WIN8 User Interface
	OS	Embedded Linux Operating System
	Solution	HI3521A Chipset
Video&Audio Input	Video Input	4 Channel
	Audio Input	4 Channel
Video&Audio Output	Video Output	BNC
	Audio Output	1 Channel
Video &Audio Parameters	Video Compression Format	H.264
	Video Encoding Resolution	1080P/720P/D1/HDI/CIF
	Video Bit Rate	250kbps ~ 4096kbps
	Audio Compression Format	G.726
Video Storage	Storage Type	Double SD Card
	3G/4G	Support
Network	WIFI	Support
	Bluetooth	Support
	AP	Support
Satellite Positioning	GPS/BD Positioning	Support
Function Interface	Serial Data Interface	1 Channel RS232/1 Channel RS485
	I/O Interface	1 Channel Alarm Input/
Other	Power	DC8-36V
	Consumption(Not include disk)	< 12W
	Operation Type	Remote Control

# Structure diagram



Easy Installation  
Simple Wiring  
Easy Maintenance



# Intelligent All-in-One (4G/GPS/G-sensor/WiFi for option) 1-4CH Mini Portable Mobile DVR (Model: FT-DVR-NK6I)



Model: FT-DVR-NK6I



# Main Features

- 1) H.265 compression, longer storage time, clearer and smoother transmission;
- 2) Integrate DSM driving behavior and driver face recognition function;
- 3) Support hybrid mode, 1080P/960P/720P camera;
- 4) New flat interface, support remote control, mouse operating, setting on client management platform;
- 5) Easy to install, can use 3M glue to paste the device directly on the windshield, the installation can be completed in 1/10 of installation time of the traditional MDVR, which not only meets the requirements of convenient disassembly and assembly, but also on-board vibration;
- 6) The whole machine industrial level program and system design and reliable EMC design ensure the stable working of itself and peripheral electronic equipment;
- 7) The whole machine structure is equipped with good datechable and dustproof design to ensure the TF, SIM Card, antenna and connection port are not damaged;
- 8) Built-in one AHD camera, and can extend 3 more AHD cameras input;
- 9) Integrated front camera can be adjusted in the vertical direction, and the camera could be completely locked through the structure after adjustment;
- 10) Integrated high sensitive MIC in car-audio, integrated speaker for broadcast and warning;
- 11) Integrated with four status indicators, the working status of the equipment can be observed in real time;
- 12) Can build-in WiFi module, automatically download, support AP hotspot to give 5 peripjerals to share the Internet;
- 13) Built-in GPS/BD moduels to achieve speed, position, time and route management;
- 14) Support line departure and area entry and exit alarm, device max can save 16 lines and areas;
- 15) Integrated 3 / 4G communication module for remote monitoring and management;
- 16) Built-in G-Sensor module can realize automatic alarm upload of abnormal vibration, rollover, impact, and sudden brake;
- 17) 1CH video output, can be connected to the car monitor for video preview and visual reversing function;
- 18) Support 10V-36V adaptive wide voltage input ultra-low power consumption design, support reverse connection / over-voltage and over-current overload protection, maximum 12V / 1.5A output;
- 19) Supports dual TF card storage (Single card supports up to 256G) Reliable file system ensures the accuracy and stability of video data and storage media.
- 20) 5CH alarm input, 1CH of alarm output, support alarm button to capture pictures manually
- 22) 1CH external USB interface, 2CH RS232 and 1CH RS485;
- 23) Support TTS voice function, can realize Chinese and English TTS scheduling broadcast;
- 24) Delay shutdown function, delay time can be set; can achieve ultra-low power sleep, GPS position can continue to report in sleep state; keep location updated;
- 25) Firmtop vehicle professional RMVS software can realize remote monitoring and management functions of computers and mobile phones;
- 26) Supports low temperature startup and work. The machine has a highly reliable heat dissipation design, and the working temperature can reach: -40°C to 70°C.
- 27) Support APP preview maintenance, real-time preview function of mobile handheld terminal

# Successful cases



New Zealand 3G public bus surveillance project



Russia Moscow police car project



Dubai school bus 3G surveillance project



Dubai public bus 3G surveillance project



Mexico School bus project



Turkey Public bus project



USA School bus project



USA Truck project



USA Armored car project



Russia Train project



Singapore bus project



USA Truck project





Paraguay Boat project



Belarus Taxi project



Iran Police car project



Turkey Public bus project



Taiwan public bus surveillance, airport bus,  
Sanitation truck surveillance project



India school bus project



Canada school bus project



A blue background with various geometric shapes. On the left, there are white outlines of triangles and polygons. Scattered across the middle and right are solid-colored triangles in shades of purple, teal, blue, green, and orange. The text 'Car Dashboard Camera' is written in yellow on the right side.

# Car Dashboard Camera

# Introduction or definition

A dashcam, **car dashboard camera**, car DVR, driving video recorder, car black box or event data recorder (EDR) is an onboard camera that continuously records the view through a vehicle's front windscreen and sometimes rear or other windows.





Model: FT-DVR-810

**Real 4K/30fps, GPS, WiFi, 4K+1080P,  
H.265**

Accessories	QTY	Unit Price (USD)
Car Charger	Sample Price (1-5 pcs)	\$XX
USB Cable	1000pcs	<b>\$XX, including dual lenses, GPS, WiFi</b>
Bracket	<b>Remark: if no need GPS, WiFi, \$X/pc less</b>	
Manual		

Stage	ID	Mock-up	T0	T1	P	MP
Status	Ready	Ready	Ready	Ready	Ready	Ready

Model Name	FT-DVR-810
CPU	Hisilicon 3559 V200
Sensor	Front Cam: SONY STARVIS IMX415 Rear Cam: SONY IMX323
Video Resolution	Front Cam: 3480*2160P@30fps Rear Cam: 1920*1080P@30fps
Lens Angle	Front Cam: F1.8 170 degree Rear Cam: F1.8 140 degree
Screen	2.31" LCD Screen
G-Sensor	Support
Motion Detection	Support
Loop Recording	Support
GPS / WiFi	Support
Built-in power	Super Capacitor
Storage	TF Card, 4G~256(Class 10 +)
Format	H.265
Language	Chinese, English, Korean, Japanese, Russian, French, German, Thai, Italian, Portuguese, Spanish etc.




Model: FT-DVR-698C

**Dual-Lens FHD 1080P, Mini, G-sensor,  
GPS / WiFi for option**

Accessories	QTY	Unit Price (USD)
Car Charger	Sample Price (1-5 pcs)	\$XX
USB Cable	1000pcs	<b>\$XX, including dual lenses, GPS, WiFi</b>
Bracket	<b>Remark: if no need GPS, WiFi, \$X/pc less</b>	
Manual		

Stage	ID	Mock-up	T0	T1	P	MP
Status	Ready	Ready	Ready	Ready	Ready	Ready

Model Name	FT-DVR-698C 
CPU	Novatek96663 V2
Sensor	Sony IMX323 + Sony IMX323
Video Resolution	Front Cam: 1920*1080P@30fps; Inside Cam: 1920*1080P@30fps
Lens Angle	170 degree + 170 degree
Screen	2.0 inch Screen 4:3
G-Sensor	Support
Motion Detection	Support
Loop Recording	Support
GPS / WiFi	Support
Built-in power	Super Capacitor + button cell
Storage	TF Card, 8G~128G (Class 10 + )
Format	H.264
Language	Chinese, English, Korean, Japanese, Russian, French, German, Thai, Italian, Portuguese, Spanish etc.




Model: FT-DVR-693

Dual-Lens FHD 1080P, Mini, G-sensor,  
GPS / WiFi for option

Accessories	QTY	Unit Price (USD)
Car Charger	Sample Price (1-5 pcs)	\$XX
USB Cable	1000pcs	\$XX, including dual lenses, GPS, WiFi
Bracket	Remark: if no need GPS, WiFi, \$X/pc less	
Manual	Notice: this model can be customized into Single-lens 4K Camera.	

Stage	ID	Mock-up	T0	T1	P	MP
Status	Ready	Ready	Ready	Ready	Ready	Ready

Model Name	FT-DVR-693 
CPU	Novatek96663 V2
Sensor	OV4689 + Sony IMX323
Video Resolution	Front Cam: 2880*2160P@24fps; 2560*1440P@30fps; 1920*1080P@60fps; 1920*1080P@30fps; Rear Cam: 1920*1080P @30fps
Lens Angle	170 degree + 170 degree
Screen	2.0 inch Screen 4:3
G-Sensor	Support
Motion Detection	Support
Loop Recording	Support
GPS / WiFi	Support
Built-in power	Super Capacitor + button cell
Storage	TF Card, 8G~128G (Class 10 + )
Format	H.264
Language	Chinese, English, Korean, Japanese, Russian, French, German, Thai, Italian, Portuguese, Spanish etc.



**Dual 1080P, ADAS, Voice Control  
Streaming Video Mirror, GPS**

Accessories	QTY(pcs)	Unit price (USD)
Car Charger USB Cable Bandage Manual	Sample (1-5pcs)	\$XX
	1000pcs	\$XX, including 1080P Rear Cam and GPS
	WiFi	Optional, Extra \$X/pc
	Voice Control	Optional, Extra \$X/pc

Stage	ID	Mock-up	T0	T1	PP	MP
Status	Ready	Ready	Ready	Ready	Ready	Ready

Model Name	FT DC-S04
CPU	Mstar 8339
Sensor	SC2363
Video Resolution	2 CH: 1080P + 1080P
Video Format/ Compression	MOV/ H.264
Photo Resolution	14M
View Angle	150° +130°
Screen	9.66" IPS TOUCH Screen
GPS	support, Optional
ADAS	Support
G-Sensor	Support
Parking Mode	Support
Battery	500mAh
Memory Card	Max to 64GB Micro SD, C10
Language	Multi Language



**2K/30fps, GPS, WiFi (Dual Band: 2.4G and 5G)  
2K+1080P, Super -Cap**

Accessories	QTY	Unit Price (USD)
Car Charger	Sample Price (1-5 pcs)	\$XX
USB Cable	1000pcs	<b>\$XX, including GPS, WiFi, 1080P Rear Cam</b>
Bracket		
Manual		
<b>Remark: if no need 1080P Rear Cam, \$X/pc less</b>		

Stage	ID	Mock-up	T0	T1	PP	MP
Status	Ready	Ready	Ready	Ready	Ready	

Model Name	FT DC-LS01
CPU	Hi3556V200
Sensor	OS04B10, 4MP
Video Resolution	<b>1- CH: 2K 1440P/30fps 2- CH: 2K + 1080P</b>
Photo Resolution	8M
Rear Cam	1080P (Optional), 130°
View Angle	150°
Screen	No Screen
GPS	Support, Built-in
WiFi	Support
G-Sensor	Support
Loop Recording	Support
Battery	Super-Cap
Memory Card	Max to 128GB Micro SD, C10
Language	Multi Language
Size (Unit)	98*29*44mm (include lens)






**4K, GPS, WiFi, 1080P+1080P, 3.0" OLED Touch Screen  
Magnetic Rechargeable Mount, Grid UI, Gesture Sensing**

Accessories	QTY	Unit Price (USD)
Car Charger	Sample Price (1-5 pcs)	\$XX
		<b>\$XX, including GPS, WiFi, 1080P Rear Cam</b>
USB Cable	1000pcs	
Bracket	<b>Remark: if no need 1080P Rear Cam, \$X/pc less</b>	
Manual		

Stage	ID	Mock-up	T0	T1	PP	MP
Status	Ready	Ready	Ready	Ready	Ready	Ready

Model Name	FT DC-GS31	
CPU	NTK96660	
Sensor	Option A: OV4689, 4MP Option B: Sony IMX335, 5MP	
Video Resolution	1- CH: 4K 2880*2160P/24fps 1920*1080P/ 60fps 2- CH: <b>1080P + 1080P</b>	
Photo Resolution	12M	
Rear Cam	1080P (Optional), 130°	
View Angle	150°	
Screen	3.0 inch OLED Touch Screen	
GPS	Support	
WiFi	Support	
G-Sensor	Support	
Parking Mode	Support	
Battery	400mAh	
Memory Card	Max to 128GB Micro SD, C10	
Language	Multi Language	
Size (Unit)	82*55*30mm (include lens)/ 83g	



**4K, GPS, WiFi , Dual 1080P**

Accessories	QTY	Unit Price (USD)
Car Charger	Sample Price (1-5 pcs)	\$XX
USB Cable	1000pcs	<b>\$XX, including GPS, WiFi, 1080P Rear Cam</b>
Bracket		
Manual		
<b>Remark: if no need 1080P Rear Cam, \$X/pc less</b>		

Stage	ID	Mock-up	T0	T1	PP	MP
Status	Ready	Ready	Ready	Ready	Ready	Ready

Model Name	FT DC-GS21
CPU	NTK96660
Sensor	OV4689, 4MP
Video Resolution	1 CH: 4K 2880*2160P/24fps 1920*1080P/60fps 2 CH: <b>1080P + 1080P</b>
Photo Resolution	12M
Rear Cam	1080P (Optional), 130°
View Angle	150°
Screen	2.35 inch LCD
GPS	Support
WiFi	Support
G-Sensor	Support
Parking Mode	Support
Battery	400mAh
Memory Card	Max to 128GB Micro SD, C10
Language	Multi Language
Size (Unit)	66*77*33mm (including lens)/ 80g



**Real 4K/30fps, GPS, WiFi, 4K+1080P  
Super-cap, H.265**

Accessories	QTY	Unit Price (USD)
Car Charger	Sample Price (1-5 pcs)	\$XX
USB Cable	1000pcs	<b>\$XX, including GPS, WiFi, 1080P Rear Cam</b>
Bracket		
Manual		
<b>Remark: if no need 1080P Rear Cam, \$X/pc less</b>		

Stage	ID	Mock-up	T0	T1	PP	MP
Status	Ready	Ready	Ready	Ready	Ready	Ready

Model Name	FT DC-W2
CPU	Hi3559V200
Sensor	OS08A10, 8MP
Video Resolution	1- CH: 4K 3840*2160P/30fps 2- CH: 4K + 1080P
Photo Resolution	8M
Rear Cam	1080P (Optional), 130°
View Angle	160°
Screen	2.35inch IPS screen
GPS	Support
WiFi	Support
G-Sensor	Support
Loop Recording	Support
Battery	Super-Cap
Memory Card	Max to 128GB Micro SD, C10
Language	Multi Language
Size (Unit)	75*64*43mm (include lens)

# More models of Car Dashboard Cameras



FHD 1080P, Mini, G-sensor,  
Parking Mode, Motion Detection

Model No.: **FT DC-V10**



FHD, Built-in **GPS**, WDR

Model No.: **FT DC-G56**



FHD 1080P, WiFi, IPS Screen,  
Super-Cap

Model No.: **FT DC-G75**



**Real 4K/30fps**, GPS, WiFi,  
**4K+1080P, H.265**

Model No.: **FT DC-W1**



Dual 1080p cameras, GPS / WiFi  
for option

Model No.: **FT DVR-692**



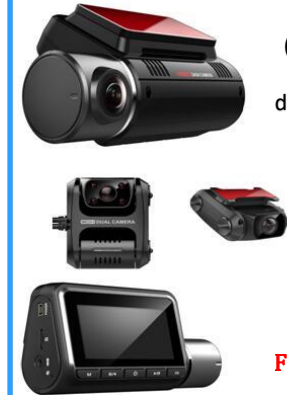
Triple-Lens  
(3 channels)  
1080p dashcam,  
GPS / WiFi for  
option

Model No.:  
**FT DVR-720A**



Triple-Lens  
(3 channels)  
1080p dashcam,  
GPS / WiFi for  
option

Model No.:  
**FT DVR-720K**



Triple-Lens  
(3 channels)  
1080p  
dashcam, GPS  
/ WiFi for  
option

Model No.:  
**FT DVR-720E**



Super Capacitor, WiFi, IPS Screen.  
FHD 1080P

Model No.: **FT DC-G70+**



**4K**, GPS, WiFi 3-in-1

Model No.: **FT DC-GS63D**



**2-in-1 Dual lens**, GPS, WiFi  
**1080P + 1080P**, Super -Cap,  
Perfect Night Vision

Model No.: **FT DC-LS02**



FHD 1080P, 3 inch IPS Screen,  
WiFi

Model No.: **FT DC-G71A**

# Chengdu Firmtop Technology Co., Ltd

Professional Supplier of Vehicle Surveillance Products  
& Car Electronics



Welcome to contact us!